

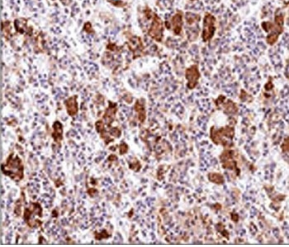
## Anti-ACTH Antibody [AH26] (A249657)

### Specifications:

Name:	Anti-ACTH Antibody [AH26]
Description:	Mouse monoclonal [AH26] antibody to ACTH.
Specificity:	This antibody is specific to Synacthen, amino acids 1-24 of ACTH, and it does not react with CLIP, amino acids 25-39 of ACTH.
Applications:	IHC-P
Recommended Dilutions:	IHC-P: 1-2 µg/ml
Reactivity:	Human, Mouse, Rat
Immunogen:	Synthetic peptide corresponding to amino acids 1-24 of human ACTH protein.
Host:	Mouse
Clonality:	Monoclonal
Clone ID:	AH26
Isotype:	IgG1
Light Chains:	kappa
Conjugate:	Unconjugated
Purification:	Protein A/G chromatography.
Concentration:	200 µg/ml
Product Form:	Liquid
Formulation:	Supplied in 10mM Phosphate Buffered Saline with 0.05% BSA and 0.05% Sodium Azide.
Storage:	Shipped at 4°C. Upon delivery aliquot and store at -20°C. Avoid freeze / thaw cycles.
General Notes:	This monoclonal antibody is also available in a different formulation without BSA and Sodium Azide - Anti-ACTH Antibody [AH26] - BSA and Azide free (A252837).
Disclaimer:	This product is for research use only. It is not intended for diagnostic or therapeutic use.

## Anti-ACTH Antibody [AH26] (A249657)

Images:



Immunohistochemical analysis of formalin-fixed, paraffin-embedded human pituitary gland using Anti-ACTH Antibody [AH26].