

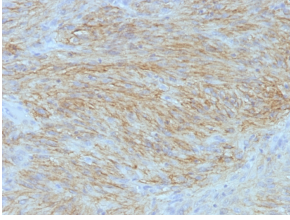
## Anti-TMEM16A Antibody [SPM580] (A249695)

### Specifications:

Name:	Anti-TMEM16A Antibody [SPM580]
Description:	Mouse monoclonal [SPM580] antibody to TMEM16A.
Applications:	IHC-P
Recommended Dilutions:	IHC-P: 1-2 µg/ml
Reactivity:	Human
Immunogen:	Recombinant human DOG-1 protein.
Host:	Mouse
Clonality:	Monoclonal
Clone ID:	SPM580
Isotype:	IgG1
Light Chains:	kappa
Conjugate:	Unconjugated
Purification:	Protein A/G chromatography.
Concentration:	200 µg/ml
Product Form:	Liquid
Formulation:	Supplied in 10mM Phosphate Buffered Saline with 0.05% BSA and 0.05% Sodium Azide.
Storage:	Shipped at 4°C. Upon delivery aliquot and store at -20°C. Avoid freeze / thaw cycles.
General Notes:	This monoclonal antibody is also available in a different formulation without BSA and Sodium Azide - Anti-TMEM16A Antibody [SPM580] - BSA and Azide free (A252875).
Disclaimer:	This product is for research use only. It is not intended for diagnostic or therapeutic use.

## Anti-TMEM16A Antibody [SPM580] (A249695)

Images:



Immunohistochemical analysis of formalin-fixed, paraffin-embedded human GIST using Anti-TMEM16A Antibody [SPM580].