

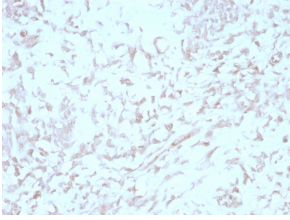
Anti-Kindlin 1 Antibody [4A5.14] (A249721)

Specifications:

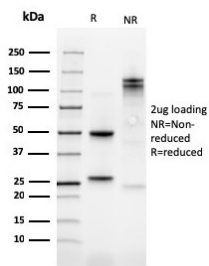
Name:	Anti-Kindlin 1 Antibody [4A5.14]
Description:	Mouse monoclonal [4A5.14] antibody to Kindlin 1.
Applications:	IP, WB, IHC-P
Recommended Dilutions:	IP: 1-2 µg / 500 µg protein lysate, WB: 1-2 µg/ml, IHC-P: 1-2 µg/ml
Reactivity:	Human
Immunogen:	Recombinant fragment, around amino acids 216-667, of Kindlin 1.
Host:	Mouse
Clonality:	Monoclonal
Clone ID:	4A5.14
Isotype:	IgG2a
Light Chains:	lambda
Conjugate:	Unconjugated
Purification:	Protein A/G chromatography.
Concentration:	200 µg/ml
Product Form:	Liquid
Formulation:	Supplied in 10mM Phosphate Buffered Saline with 0.05% BSA and 0.05% Sodium Azide.
Storage:	Shipped at 4°C. Upon delivery aliquot and store at -20°C. Avoid freeze / thaw cycles.
General Notes:	This monoclonal antibody is also available in a different formulation without BSA and Sodium Azide - Anti-Kindlin 1 Antibody [4A5.14] - BSA and Azide free (A252901).
Disclaimer:	This product is for research use only. It is not intended for diagnostic or therapeutic use.

Anti-Kindlin 1 Antibody [4A5.14] (A249721)

Images:



Immunohistochemical analysis of formalin-fixed, paraffin-embedded human liver using Anti-Kindlin 1 Antibody [4A5.14].



SDS-PAGE analysis of Anti-Kindlin 1 Antibody [4A5.14] under non-reduced and reduced conditions; showing intact IgG and intact heavy and light chains, respectively. SDS-PAGE analysis confirms the integrity and purity of the antibody.