

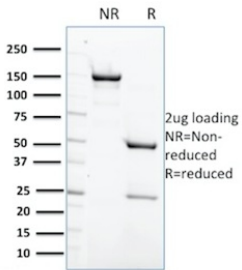
Anti-SHP1 Antibody [CPTC-PTPN6-2] (A249778)

Specifications:

Name:	Anti-SHP1 Antibody [CPTC-PTPN6-2]
Description:	Mouse monoclonal [CPTC-PTPN6-2] antibody to SHP1.
Applications:	ELISA, WB
Recommended Dilutions:	WB: 1-2 µg/ml
Reactivity:	Human
Immunogen:	Recombinant full-length human PTPN6 protein.
Host:	Mouse
Clonality:	Monoclonal
Clone ID:	CPTC-PTPN6-2
Isotype:	IgG2a
Light Chains:	kappa
Conjugate:	Unconjugated
Purification:	Protein A/G chromatography.
Concentration:	200 µg/ml
Product Form:	Liquid
Formulation:	Supplied in 10mM Phosphate Buffered Saline with 0.05% BSA and 0.05% Sodium Azide.
Storage:	Shipped at 4°C. Upon delivery aliquot and store at -20°C. Avoid freeze / thaw cycles.
General Notes:	This monoclonal antibody is also available in a different formulation without BSA and Sodium Azide - Anti-SHP1 Antibody [CPTC-PTPN6-2] - BSA and Azide free (A252958).
Disclaimer:	This product is for research use only. It is not intended for diagnostic or therapeutic use.

Anti-SHP1 Antibody [CPTC-PTPN6-2] (A249778)

Images:



SDS-PAGE analysis of Anti-SHP1 Antibody [CPTC-PTPN6-2] under non-reduced and reduced conditions; showing intact IgG and intact heavy and light chains, respectively. SDS-PAGE analysis confirms the integrity and purity of the antibody.