

Anti-Calprotectin Antibody [rMAC3781] (A249927)

Specifications:

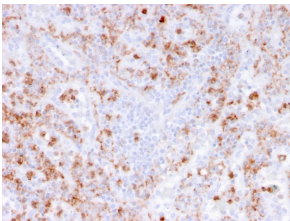
| | |
|------------------------|---|
| Name: | Anti-Calprotectin Antibody [rMAC3781] |
| Description: | Recombinant mouse monoclonal [rMAC3781] antibody to Calprotectin. |
| Specificity: | This antibody recognizes the L1 or Calprotectin molecule, an intra-cytoplasmic antigen comprising of a 12kDa alpha chain and a 14kDa beta chain expressed by granulocytes, monocytes and by tissue macrophages. Macrophages usually arise from hematopoietic stem cells in the bone marrow. Under migration into tissues, the monocytes undergo further differentiation to become multifunctional tissue macrophages. They are classified into normal and inflammatory macrophages. Normal macrophages include macrophages in connective tissue (histiocytes), liver (Kupffer s cells), lung (alveolar macrophages), lymph nodes (free and fixed macrophages), spleen (free and fixed macrophages), bone marrow (fixed macrophages), serous fluids (pleural and peritoneal macrophages), skin (histiocytes, Langerhans cell) and in other tissues. Inflammatory macrophages are present in various exudates. Macrophages are part of the innate immune system, recognizing, engulfing and destroying many potential pathogens including bacteria, pathogenic protozoa, fungi and helminthes. This MAb reacts with neutrophils, monocytes, macrophages, and squamous mucosal epithelia and has been shown as an important marker for identifying macrophages in tissue sections. |
| Applications: | IHC-P |
| Recommended Dilutions: | IHC-P: 1-2 µg/ml |
| Reactivity: | Human, Baboon, Monkey, Bovine, Porcine, Goat, Horse, Feline, Canine, Rabbit, Guinea Pig, Rat, Mouse |
| Immunogen: | Affinity purified monocyte membrane preparation. |
| Host: | Mouse |
| Clonality: | Monoclonal |
| Clone ID: | rMAC3781 |
| Isotype: | IgG1 |
| Light Chains: | kappa |
| Conjugate: | Unconjugated |
| Purification: | Protein A/G chromatography. |
| Concentration: | 200 µg/ml |
| Product Form: | Liquid |
| Formulation: | Supplied in 10mM Phosphate Buffered Saline with 0.05% BSA and 0.05% Sodium Azide. |

Anti-Calprotectin Antibody [rMAC3781] (A249927)

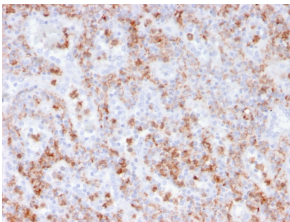
Specifications continued:

| | |
|----------------|--|
| Storage: | Shipped at 4°C. Upon delivery aliquot and store at -20°C. Avoid freeze / thaw cycles. |
| General Notes: | This monoclonal antibody is also available in a different formulation without BSA and Sodium Azide - Anti-Calprotectin Antibody [rMAC3781] - BSA and Azide free (A253107). |
| Disclaimer: | This product is for research use only. It is not intended for diagnostic or therapeutic use. |

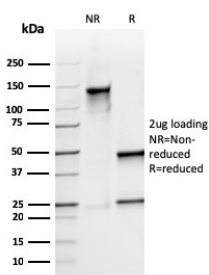
Images:



Immunohistochemical analysis of formalin-fixed, paraffin-embedded human spleen using Anti-Calprotectin Antibody [rMAC3781].



Immunohistochemical analysis of formalin-fixed, paraffin-embedded human spleen using Anti-Calprotectin Antibody [rMAC3781].



SDS-PAGE analysis of Anti-Calprotectin Antibody [rMAC3781] under non-reduced and reduced conditions; showing intact IgG and intact heavy and light chains, respectively. SDS-PAGE analysis confirms the integrity and purity of the antibody.