

Anti-S100 beta Antibody [4C4.9 + S100B/1012] (A249937)**Specifications:**

| | |
|------------------------|---|
| Name: | Anti-S100 beta Antibody [4C4.9 + S100B/1012] |
| Description: | Mouse monoclonal [4C4.9 + S100B/1012] antibody to S100 beta. |
| Specificity: | S100 belongs to the family of calcium binding proteins. S100A and S100B proteins are two members of the S100 family. S100A is composed of an alpha and a beta chain whereas S100B is composed of two beta chains. This antibody is specific against an epitope located on the beta-chain (i.e. in S-100A and S-100B) but not on the alpha-chain of S-100 (i.e. in S-100A and S100A0). This antibody can be used to localize S-100A and S-100B in various tissue sections. S-100 protein has been found in normal melanocytes, Langerhans cells, histiocytes, chondrocytes, lipocytes, skeletal and cardiac muscle, Schwann cells, epithelial and myoepithelial cells of the breast, salivary and sweat glands, as well as in glial cells. Neoplasms derived from these cells also express S-100 protein, albeit non-uniformly. A large number of well-differentiated tumors of the salivary gland, adipose and cartilaginous tissue, and Schwann cell-derived tumors express S-100 protein. Almost all malignant melanomas and cases of histiocytosis X are positive for S-100 protein. |
| Applications: | Flow Cytometry, IF, WB, IHC-P |
| Recommended Dilutions: | Flow Cytometry: 1-2 µg/million cells, IF: 1-2 µg/ml, WB: 1-2 µg/ml, IHC-P: 0.25-0.5 µg/ml |
| Reactivity: | Human, Mouse, Rat, Bovine |
| Immunogen: | Clone 4C4.9: Native purified bovine brain S100 protein. Clone 4C4.9: Recombinant full-length human S100B protein. |
| Host: | Mouse |
| Clonality: | Oligoclonal |
| Clone ID: | 4C4.9 + S100B/1012 |
| Isotype: | IgG2a, kappa + IgG2a, kappa |
| Conjugate: | Unconjugated |
| Purification: | Protein A/G chromatography. |
| Concentration: | 200 µg/ml |
| Product Form: | Liquid |
| Formulation: | Supplied in 10mM Phosphate Buffered Saline with 0.05% BSA and 0.05% Sodium Azide. |
| Storage: | Shipped at 4°C. Upon delivery aliquot and store at -20°C. Avoid freeze / thaw cycles. |

Anti-S100 beta Antibody [4C4.9 + S100B/1012] (A249937)

Specifications continued:

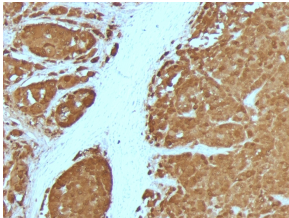
General Notes:

Please note, this product is an oligoclonal antibody; it is a cocktail of monoclonal antibodies that have been carefully selected. Oligoclonal antibodies not only have the specificity and batch-to-batch consistency of a monoclonal antibody, but they also have the advantage of the sensitivity of a polyclonal antibody due to their ability to recognize multiple epitopes on an antigen. This oligoclonal antibody is also available in a different formulation without BSA and Sodium Azide - Anti-S100 beta Antibody [4C4.9 + S100B/1012] - BSA and Azide free (A253117).

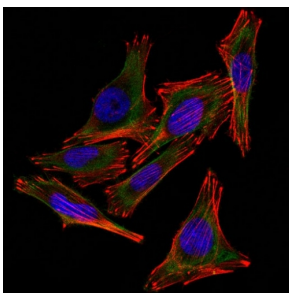
Disclaimer:

This product is for research use only. It is not intended for diagnostic or therapeutic use.

Images:



Immunohistochemical analysis of formalin-fixed, paraffin-embedded human melanoma using Anti-S100 beta Antibody [4C4.9 + S100B/1012].



Immunofluorescent analysis of A2058 cells stained with Anti-S100 beta Antibody [4C4.9 + S100B/1012] (AF488) (Green). F-actin filaments were labeled with DyLight 554 Phalloidin (Red). DAPI was used to stain the cell nuclei (Blue).



Negative Control: Immunofluorescent analysis of A2058 cells using Mouse IgG2a (AF488) - Isotype Control (Green). F-actin filaments were labeled with DyLight 554 Phalloidin (Red). DAPI was used to stain the cell nuclei (Blue).