

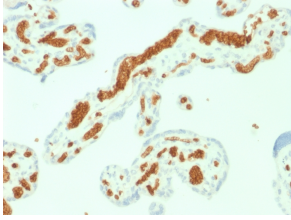
Anti-alpha 1 Spectrin Antibody [SPTA1/1832] (A250037)

Specifications:

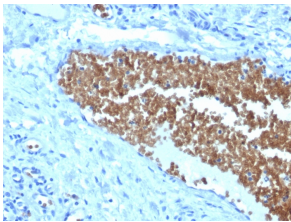
Name:	Anti-alpha 1 Spectrin Antibody [SPTA1/1832]
Description:	Mouse monoclonal [SPTA1/1832] antibody to alpha 1 Spectrin.
Specificity:	Spectrin is an actin crosslinking and molecular scaffold protein that links the plasma membrane to the actin cytoskeleton, and functions in the determination of cell shape, arrangement of transmembrane proteins, and organization of organelles. Spectrins function as membrane organizers and stabilizers, composed of non-homologous) are present in other somatic cells. The spectrin tetramers in erythrocytes act as barriers to lateral diffusion, but spectrin dimers seem to lack this function.
Applications:	ELISA, WB, IHC-P
Recommended Dilutions:	WB: 1-2 µg/ml, IHC-P: 1-2 µg/ml
Reactivity:	Human
Immunogen:	Recombinant fragment, around amino acids 356-475, of human SPTA protein. The exact sequence is proprietary.
Host:	Mouse
Clonality:	Monoclonal
Clone ID:	SPTA1/1832
Isotype:	IgG2b
Light Chains:	kappa
Conjugate:	Unconjugated
Purification:	Protein A/G chromatography.
Concentration:	200 µg/ml
Product Form:	Liquid
Formulation:	Supplied in 10mM Phosphate Buffered Saline with 0.05% BSA and 0.05% Sodium Azide.
Storage:	Shipped at 4°C. Upon delivery aliquot and store at -20°C. Avoid freeze / thaw cycles.
General Notes:	This monoclonal antibody is also available in a different formulation without BSA and Sodium Azide - Anti-alpha 1 Spectrin Antibody [SPTA1/1832] - BSA and Azide free (A253217).
Disclaimer:	This product is for research use only. It is not intended for diagnostic or therapeutic use.

Anti-alpha 1 Spectrin Antibody [SPTA1/1832] (A250037)

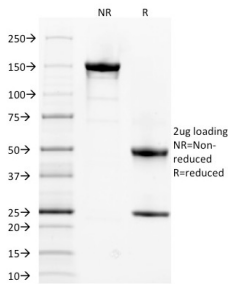
Images:



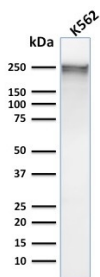
Immunohistochemical analysis of formalin-fixed, paraffin-embedded human placenta using Anti-alpha 1 Spectrin Antibody [SPTA1/1832].



Immunohistochemical analysis of formalin-fixed, paraffin-embedded human tonsil using Anti-alpha 1 Spectrin Antibody [SPTA1/1832].



SDS-PAGE analysis of Anti-alpha 1 Spectrin Antibody [SPTA1/1832] under non-reduced and reduced conditions; showing intact IgG and intact heavy and light chains, respectively. SDS-PAGE analysis confirms the integrity and purity of the antibody.



Western blot analysis of human K562 cell lysate using Anti-alpha 1 Spectrin Antibody [SPTA1/1832].