

Anti-C4d Antibody [C4D204] (A250215)

Specifications:

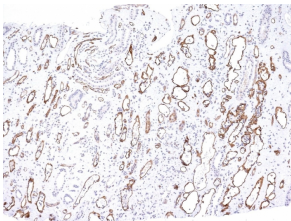
Name:	Anti-C4d Antibody [C4D204]
Description:	Mouse monoclonal [C4D204] antibody to C4d.
Specificity:	<p>This antibody is specific to Complement 4d (C4d) and reacts with the secreted as well as cell-bound C4d. C4d is a degradation product of the activated complement factor C4b. Complement 4b is typically activated by binding of Abs to specific target molecules. Following activation and degradation of the C4 molecule, thio-ester groups are exposed, which allow transient, covalent binding of the degradation product Complement 4d to endothelial cell surfaces and extracellular matrix components of vascular basement membranes near the sites of C4 activation. The presence of C4d in peritubular capillaries is a key indicator for acute humoral (i.e. antibody-mediated) rejection of kidney, heart, pancreas and lung allografts. As an established marker of antibody-mediated acute renal allograft rejection and its proclivity for endothelium, this component can be detected in peritubular capillaries in chronic renal allograft rejection as well as hyperacute rejection, acute vascular rejection, acute cellular rejection, and borderline rejection. It has been shown to be a significant predictor of transplant kidney graft survival. Anti-C4d, combined with anti-C3d, can be utilized as a tool for diagnosis of allograft rejection that may warrant a prompt and aggressive anti-rejection treatment.</p>
Applications:	ELISA, IHC-P
Recommended Dilutions:	ELISA: 1-2 µg/ml, IHC-P: 1:200-1:400
Reactivity:	Human
Immunogen:	Recombinant full-length human Complement 4d protein.
Host:	Mouse
Clonality:	Monoclonal
Clone ID:	C4D204
Isotype:	IgG1
Light Chains:	kappa
Conjugate:	Unconjugated
Purification:	Protein A/G chromatography.
Concentration:	200 µg/ml
Product Form:	Liquid
Formulation:	Supplied in 10mM Phosphate Buffered Saline with 0.05% BSA and 0.05% Sodium Azide.

Anti-C4d Antibody [C4D204] (A250215)

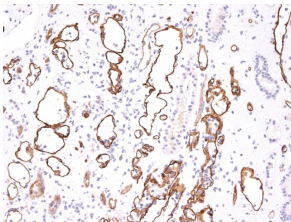
Specifications continued:

Storage:	Shipped at 4°C. Upon delivery aliquot and store at -20°C. Avoid freeze / thaw cycles.
General Notes:	This monoclonal antibody is also available in a different formulation without BSA and Sodium Azide - Anti-C4d Antibody [C4D204] - BSA and Azide free (A253395).
Disclaimer:	This product is for research use only. It is not intended for diagnostic or therapeutic use.

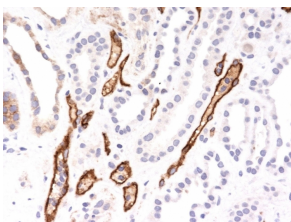
Images:



Immunohistochemical analysis of formalin-fixed, paraffin-embedded human kidney transplant using Anti-C4d Antibody [C4D204].



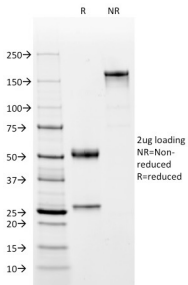
Immunohistochemical analysis of formalin-fixed, paraffin-embedded human kidney transplant using Anti-C4d Antibody [C4D204].



Immunohistochemical analysis of formalin-fixed, paraffin-embedded human hepatocellular carcinoma using Anti-C4d Antibody [C4D204].

Anti-C4d Antibody [C4D204] (A250215)

Images continued:



SDS-PAGE analysis of Anti-C4d Antibody [C4D204] under non-reduced and reduced conditions; showing intact IgG and intact heavy and light chains, respectively. SDS-PAGE analysis confirms the integrity and purity of the antibody.