

Anti-VLDL Receptor Antibody [VLDLR/1337] (A250316)

Specifications:

Name:	Anti-VLDL Receptor Antibody [VLDLR/1337]
Description:	Mouse monoclonal [VLDLR/1337] antibody to VLDL Receptor.
Specificity:	VLDLR (very low density lipoprotein receptor) is a member of the LDL receptor gene family, which includes LDL receptor, LRP, megalin, VLDLR and ApoER2. The LDL receptor family is characterized by a cluster of cysteine-rich class A repeats, epidermal growth factor (EGF)-like repeats, YWTD repeats and an O-linked sugar domain. VLDLR associates with RAP (receptor associated protein) during receptor folding, and RAP facilitates the secretion of the extracellular region of VLDLR. VLDLR is thought to mediate the interaction of extracellular Reelin and cytosolic mDab1 (mammalian disabled protein), which activates a tyrosine kinase. This pathway regulates the migration of neurons along the radial glial fiber network during brain development.
Applications:	IHC-P
Recommended Dilutions:	IHC-P: 1-2 µg/ml
Reactivity:	Human, Rat
Immunogen:	Recombinant C terminal fragment of human VLDLR protein.
Host:	Mouse
Clonality:	Monoclonal
Clone ID:	VLDLR/1337
Isotype:	IgG1
Light Chains:	lambda
Conjugate:	Unconjugated
Purification:	Protein A/G chromatography.
Concentration:	200 µg/ml
Product Form:	Liquid
Formulation:	Supplied in 10mM Phosphate Buffered Saline with 0.05% BSA and 0.05% Sodium Azide.
Storage:	Shipped at 4°C. Upon delivery aliquot and store at -20°C. Avoid freeze / thaw cycles.
General Notes:	This monoclonal antibody is also available in a different formulation without BSA and Sodium Azide - Anti-VLDL Receptor Antibody [VLDLR/1337] - BSA and Azide free (A253496).

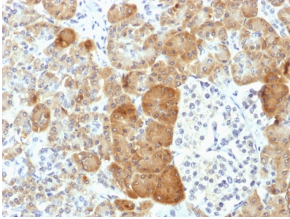
Anti-VLDL Receptor Antibody [VLDLR/1337] (A250316)

Specifications continued:

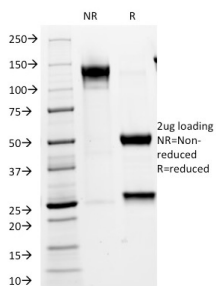
Disclaimer:

This product is for research use only. It is not intended for diagnostic or therapeutic use.

Images:



Immunohistochemical analysis of formalin-fixed, paraffin-embedded human pancreas using Anti-VLDL Receptor Antibody [VLDLR/1337].



SDS-PAGE analysis of Anti-VLDL Receptor Antibody [VLDLR/1337] under non-reduced and reduced conditions; showing intact IgG and intact heavy and light chains, respectively. SDS-PAGE analysis confirms the integrity and purity of the antibody.