

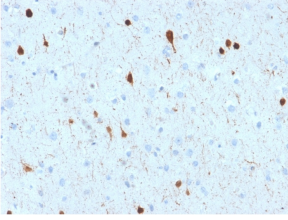
Anti-Calretinin Antibody [CALB2/2602] (A250372)

Specifications:

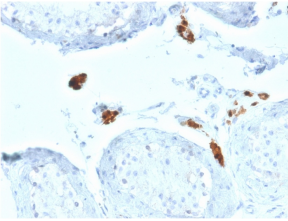
Name:	Anti-Calretinin Antibody [CALB2/2602]
Description:	Mouse monoclonal [CALB2/2602] antibody to Calretinin.
Applications:	WB, IHC-P
Recommended Dilutions:	WB: 1-2 µg/ml, IHC-P: 1-2 µg/ml
Reactivity:	Human
Immunogen:	Recombinant fragment, around amino acids 23-242, of human Calretinin protein. The exact sequence is proprietary.
Host:	Mouse
Clonality:	Monoclonal
Clone ID:	CALB2/2602
Isotype:	IgG1
Light Chains:	kappa
Conjugate:	Unconjugated
Purification:	Protein A chromatography.
Concentration:	200 µg/ml
Product Form:	Liquid
Formulation:	Supplied in 10mM Phosphate Buffered Saline with 0.05% BSA and 0.05% Sodium Azide.
Storage:	Shipped at 4°C. Upon delivery aliquot and store at -20°C. Avoid freeze / thaw cycles.
General Notes:	This monoclonal antibody is also available in a different formulation without BSA and Sodium Azide - Anti-Calretinin Antibody [CALB2/2602] - BSA and Azide free (A253552).
Disclaimer:	This product is for research use only. It is not intended for diagnostic or therapeutic use.

Anti-Calretinin Antibody [CALB2/2602] (A250372)

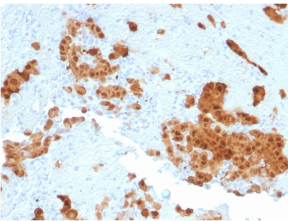
Images:



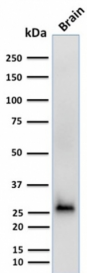
Immunohistochemical analysis of formalin-fixed, paraffin-embedded human cerebellum using Anti-Calretinin Antibody [CALB2/2602].



Immunohistochemical analysis of formalin-fixed, paraffin-embedded human testicular carcinoma using Anti-Calretinin Antibody [CALB2/2602].



Immunohistochemical analysis of formalin-fixed, paraffin-embedded human mesothelioma using Anti-Calretinin Antibody [CALB2/2602].



Western blot analysis of human brain tissue lysate using Anti-Calretinin Antibody [CALB2/2602].