

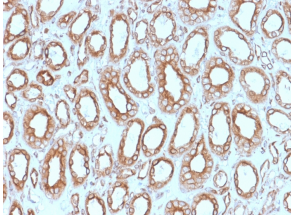
## Anti-Calnexin Antibody [CANX/1543] (A250401)

### Specifications:

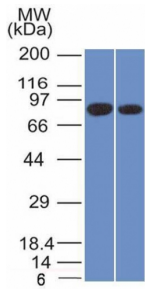
Name:	Anti-Calnexin Antibody [CANX/1543]
Description:	Mouse monoclonal [CANX/1543] antibody to Calnexin.
Applications:	ELISA, WB, IHC-P
Recommended Dilutions:	WB: 1-2 µg/ml, IHC-P: 1-2 µg/ml
Reactivity:	Human
Immunogen:	Recombinant N terminal fragment, around amino acids 1-300, of human Calnexin protein. The exact sequence is proprietary.
Host:	Mouse
Clonality:	Monoclonal
Clone ID:	CANX/1543
Isotype:	IgG1
Light Chains:	kappa
Conjugate:	Unconjugated
Purification:	Protein A/G chromatography.
Concentration:	200 µg/ml
Product Form:	Liquid
Formulation:	Supplied in 10mM Phosphate Buffered Saline with 0.05% BSA and 0.05% Sodium Azide.
Storage:	Shipped at 4°C. Upon delivery aliquot and store at -20°C. Avoid freeze / thaw cycles.
General Notes:	This monoclonal antibody is also available in a different formulation without BSA and Sodium Azide - Anti-Calnexin Antibody [CANX/1543] - BSA and Azide free (A253581).
Disclaimer:	This product is for research use only. It is not intended for diagnostic or therapeutic use.

# Anti-Calnexin Antibody [CANX/1543] (A250401)

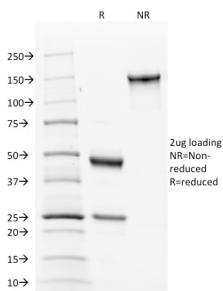
## Images:



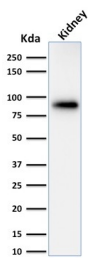
Immunohistochemical analysis of formalin-fixed, paraffin-embedded human renal cell carcinoma using Anti-Calnexin Antibody [CANX/1543].



Western blot analysis of PANC1 and MCF-7 cell lysates using Anti-Calnexin Antibody [CANX/1543].



SDS-PAGE analysis of Anti-Calnexin Antibody [CANX/1543] under non-reduced and reduced conditions; showing intact IgG and intact heavy and light chains, respectively. SDS-PAGE analysis confirms the integrity and purity of the antibody.



Western blot analysis of human kidney lysate using Anti-Calnexin Antibody [CANX/1543].