

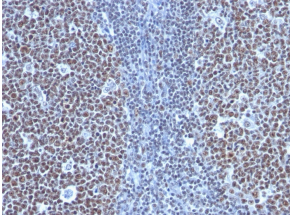
Anti-Cyclin B1 Antibody [SPM619] (A250461)

Specifications:

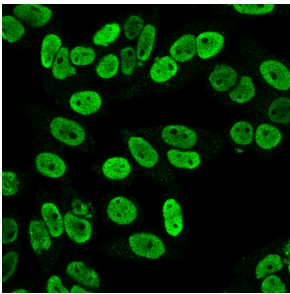
| | |
|------------------------|---|
| Name: | Anti-Cyclin B1 Antibody [SPM619] |
| Description: | Mouse monoclonal [SPM619] antibody to Cyclin B1. |
| Applications: | Flow Cytometry, IF, IHC-P |
| Recommended Dilutions: | Flow Cytometry: 1-2 µg/million cells, IF: 1-2 µg/ml, IHC-P: 1-2 µg/ml |
| Reactivity: | Human, Mouse |
| Immunogen: | Recombinant full-length human CCNB1 protein. |
| Host: | Mouse |
| Clonality: | Monoclonal |
| Clone ID: | SPM619 |
| Isotype: | IgG1 |
| Light Chains: | kappa |
| Conjugate: | Unconjugated |
| Purification: | Protein A/G chromatography. |
| Concentration: | 200 µg/ml |
| Product Form: | Liquid |
| Formulation: | Supplied in 10mM Phosphate Buffered Saline with 0.05% BSA and 0.05% Sodium Azide. |
| Storage: | Shipped at 4°C. Upon delivery aliquot and store at -20°C. Avoid freeze / thaw cycles. |
| General Notes: | This monoclonal antibody is also available in a different formulation without BSA and Sodium Azide - Anti-Cyclin B1 Antibody [SPM619] - BSA and Azide free (A253641). |
| Disclaimer: | This product is for research use only. It is not intended for diagnostic or therapeutic use. |

Anti-Cyclin B1 Antibody [SPM619] (A250461)

Images:



Immunohistochemical analysis of formalin-fixed, paraffin-embedded human tonsil using Anti-Cyclin B1 Antibody [SPM619].



Immunofluorescent analysis of PFA fixed HeLa cells stained with Anti-Cyclin B1 Antibody [SPM619] followed by Goat Anti-Mouse IgG (CF® 488) (Green).