

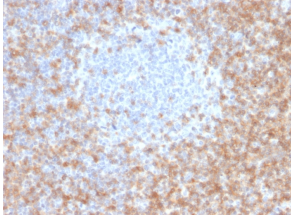
## Anti-CD5 Antibody [CD5/2416] (A250534)

### Specifications:

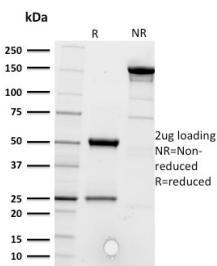
Name:	Anti-CD5 Antibody [CD5/2416]
Description:	Mouse monoclonal [CD5/2416] antibody to CD5.
Applications:	Flow Cytometry, WB, IF, IHC-P
Recommended Dilutions:	Flow Cytometry: 1-2 µg/million cells, WB: 1-2 µg/ml, IF: 1-2 µg/ml, IHC-P: 1-2 µg/ml
Reactivity:	Human
Immunogen:	Recombinant fragment, around amino acids 269-366, of human CD5 protein. The exact sequence is proprietary.
Host:	Mouse
Clonality:	Monoclonal
Clone ID:	CD5/2416
Isotype:	IgG2b
Light Chains:	kappa
Conjugate:	Unconjugated
Purification:	Protein A/G chromatography.
Concentration:	200 µg/ml
Product Form:	Liquid
Formulation:	Supplied in 10mM Phosphate Buffered Saline with 0.05% BSA and 0.05% Sodium Azide.
Storage:	Shipped at 4°C. Upon delivery aliquot and store at -20°C. Avoid freeze / thaw cycles.
General Notes:	This monoclonal antibody is also available in a different formulation without BSA and Sodium Azide - Anti-CD5 Antibody [CD5/2416] - BSA and Azide free (A253714).
Disclaimer:	This product is for research use only. It is not intended for diagnostic or therapeutic use.

# Anti-CD5 Antibody [CD5/2416] (A250534)

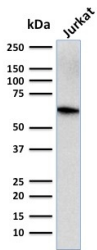
## Images:



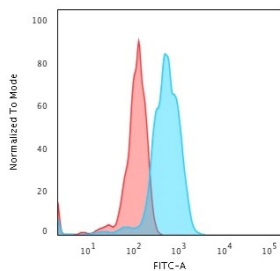
Immunohistochemical analysis of formalin-fixed, paraffin-embedded human tonsil using Anti-CD5 Antibody [CD5/2416].



SDS-PAGE analysis of Anti-CD5 Antibody [CD5/2416] under non-reduced and reduced conditions; showing intact IgG and intact heavy and light chains, respectively. SDS-PAGE analysis confirms the integrity and purity of the antibody.



Western blot analysis of human Jurkat cell lysate using Anti-CD5 Antibody [CD5/2416].



Flow cytometric analysis of human Jurkat cells using Anti-CD5 Antibody [CD5/2416] followed by Goat Anti-Mouse IgG (CF® 488) (Blue). Isotype Control (Red).