

## Anti-CD20 Antibody [IGEL/1497R] (A250601)

### Specifications:

Name:	Anti-CD20 Antibody [IGEL/1497R]
Description:	Recombinant rabbit monoclonal [IGEL/1497R] antibody to CD20.
Specificity:	This antibody recognizes a protein of 30-33kDa, which is identified as CD20. It is a non-Ig differentiation antigen of B-cells and its expression is restricted to normal and neoplastic B-cells, being absent from all other leukocytes and tissues. CD20 is expressed by pre B-cells and persists during all stages of B-cell maturation but is lost upon terminal differentiation into plasma cells. This MAb can be used for immunophenotyping of leukemia and malignant cells, B lymphocyte detection in peripheral blood and B cell localization in tissues. It reacts with the majority of B-cells present in peripheral blood and lymphoid tissues and their derived lymphomas. In lymphoid tissue, germinal center blasts and B-immunoblasts are particularly reactive. It is a reliable antibody for ascribing a B-cell phenotype in known lymphoid tissues. Rarely, CD20-positive T-cell lymphomas have been reported. Reactivity has also been noted with Reed-Sternberg cells in cases of Hodgkins disease, particularly of lymphocyte predominant type.
Applications:	Flow Cytometry, IHC-P
Recommended Dilutions:	Flow Cytometry: 1-2 µg/million cells, IHC-P: 1-2 µg/ml
Reactivity:	Human
Immunogen:	Recombinant full-length human MS4A1 protein.
Host:	Rabbit
Clonality:	Monoclonal
Clone ID:	IGEL/1497R
Isotype:	IgG
Conjugate:	Unconjugated
Purification:	Protein A chromatography.
Concentration:	200 µg/ml
Product Form:	Liquid
Formulation:	Supplied in 10mM Phosphate Buffered Saline with 0.05% BSA and 0.05% Sodium Azide.
Storage:	Shipped at 4°C. Upon delivery aliquot and store at -20°C. Avoid freeze / thaw cycles.

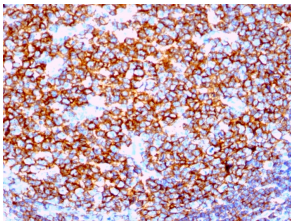
# Anti-CD20 Antibody [IGEL/1497R] (A250601)

## Specifications continued:

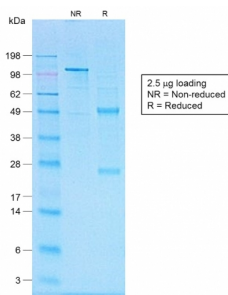
**General Notes:** This monoclonal antibody is also available in a different formulation without BSA and Sodium Azide - Anti-CD20 Antibody [IGEL/1497R] - BSA and Azide free (A253781).

**Disclaimer:** This product is for research use only. It is not intended for diagnostic or therapeutic use.

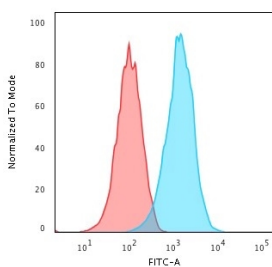
## Images:



Immunohistochemical analysis of formalin-fixed, paraffin-embedded human tonsil using Anti-CD20 Antibody [IGEL/1497R].



SDS-PAGE analysis of Anti-CD20 Antibody [IGEL/1497R] under non-reduced and reduced conditions; showing intact IgG and intact heavy and light chains, respectively. SDS-PAGE analysis confirms the integrity and purity of the antibody.



Flow cytometric analysis of Raji cells using Anti-CD20 Antibody [IGEL/1497R] followed by Goat Anti-Mouse IgG (CF® 488) (Blue). Isotype Control (Red).