

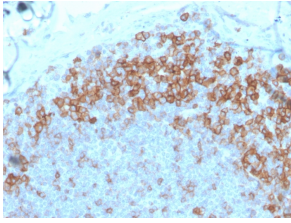
Anti-CD27 Antibody [LPFS2/4177] (A250621)

Specifications:

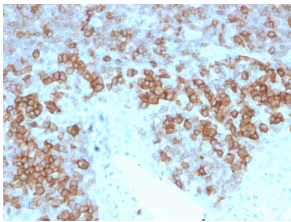
Name:	Anti-CD27 Antibody [LPFS2/4177]
Description:	Mouse monoclonal [LPFS2/4177] antibody to CD27.
Specificity:	This antibody recognizes a protein of a disulfide-linked 120kDa dimer, identified as CD27. It is expressed on the majority of peripheral T cells, medullary thymocytes, memory-type B cells, and natural killer cells. It is a transmembrane phosphoglycoprotein that belongs to the tumor necrosis factor receptor (TNFR) superfamily. CD27 binds to its ligand CD70, a member of the TNF family, and induces T-cell co-stimulation and B-cell activation. It also interacts with TRAFs and is involved in activation of NF B and SAPK/JNK and induces apoptosis.
Applications:	IHC-P
Recommended Dilutions:	IHC-P: 1-2 µg/ml
Reactivity:	Human
Immunogen:	Recombinant fragment, around amino acids 28-170, of human CD27 protein. The exact sequence is proprietary.
Host:	Mouse
Clonality:	Monoclonal
Clone ID:	LPFS2/4177
Isotype:	IgG1
Light Chains:	kappa
Conjugate:	Unconjugated
Purification:	Protein A/G chromatography.
Concentration:	200 µg/ml
Product Form:	Liquid
Formulation:	Supplied in 10mM Phosphate Buffered Saline with 0.05% BSA and 0.05% Sodium Azide.
Storage:	Shipped at 4°C. Upon delivery aliquot and store at -20°C. Avoid freeze / thaw cycles.
General Notes:	This monoclonal antibody is also available in a different formulation without BSA and Sodium Azide - Anti-CD27 Antibody [LPFS2/4177] - BSA and Azide free (A253801).
Disclaimer:	This product is for research use only. It is not intended for diagnostic or therapeutic use.

Anti-CD27 Antibody [LPFS2/4177] (A250621)

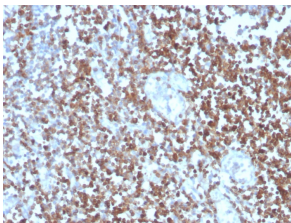
Images:



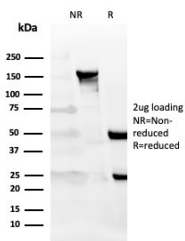
Immunohistochemical analysis of formalin-fixed, paraffin-embedded human tonsil using Anti-CD27 Antibody [LPFS2/4177].



Immunohistochemical analysis of formalin-fixed, paraffin-embedded human tonsil using Anti-CD27 Antibody [LPFS2/4177].



Immunohistochemical analysis of formalin-fixed, paraffin-embedded human tonsil using Anti-CD27 Antibody [LPFS2/4177].



SDS-PAGE analysis of Anti-CD27 Antibody [LPFS2/4177] under non-reduced and reduced conditions; showing intact IgG and intact heavy and light chains, respectively. SDS-PAGE analysis confirms the integrity and purity of the antibody.