

Anti-NULL Antibody [C86/2160R] (A250648)

Specifications:

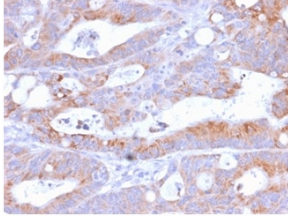
| | |
|------------------------|---|
| Name: | Anti-NULL Antibody [C86/2160R] |
| Description: | Recombinant rabbit monoclonal [C86/2160R] antibody to NULL. |
| Specificity: | This antibody recognizes a protein of 70kDa, which is identified as CD86. CD86 is a type I transmembrane glycoprotein and a member of the immunoglobulin superfamily of cell surface receptors. It is expressed at high levels on resting peripheral monocytes and dendritic cells and at very low density on resting B and T lymphocytes. CD86 expression is rapidly upregulated by B cell specific stimuli with peak expression at 18 to 42 hours after stimulation. CD86, along with CD80/B71, is an important accessory molecule in T cell co-stimulation via its interaction with CD28 and CD152/CTLA4. Since CD86 has rapid kinetics of induction, it is believed to be the major CD28 ligand expressed early in the immune response. It is also found on malignant Hodgkin and Reed Sternberg (HRS) cells in Hodgkins disease. |
| Applications: | ELISA, Flow Cytometry, IF, WB, IHC-P |
| Recommended Dilutions: | Flow Cytometry: 1-2 µg/million cells, IF: 1-2 µg/ml, WB: 1-2 µg/ml, IHC-P: 1-2 µg/ml |
| Reactivity: | Human, Mouse, Rat |
| Immunogen: | Recombinant full-length human CD86 protein. |
| Host: | Rabbit |
| Clonality: | Monoclonal |
| Clone ID: | C86/2160R |
| Isotype: | IgG |
| Conjugate: | Unconjugated |
| Purification: | Protein A/G chromatography. |
| Concentration: | 200 µg/ml |
| Product Form: | Liquid |
| Formulation: | Supplied in 10mM Phosphate Buffered Saline with 0.05% BSA and 0.05% Sodium Azide. |
| Storage: | Shipped at 4°C. Upon delivery aliquot and store at -20°C. Avoid freeze / thaw cycles. |
| General Notes: | This monoclonal antibody is also available in a different formulation without BSA and Sodium Azide - Anti-NULL Antibody [C86/2160R] - BSA and Azide free (A253828). |

Anti-NULL Antibody [C86/2160R] (A250648)

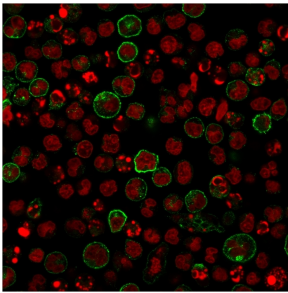
Specifications continued:

Disclaimer: This product is for research use only. It is not intended for diagnostic or therapeutic use.

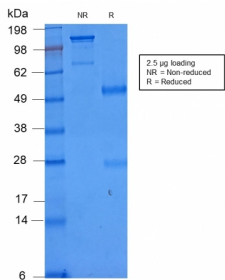
Images:



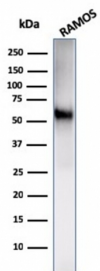
Immunohistochemical analysis of formalin-fixed, paraffin-embedded human colon using Anti-NULL Antibody [C86/2160R].



Immunofluorescent analysis of Raji cells stained with Anti-NULL Antibody [C86/2160R] followed by Goat Anti-Rabbit IgG (CF® 488) (Green). Nuclei are labeled with RedDot.



SDS-PAGE analysis of Anti-NULL Antibody [C86/2160R] under non-reduced and reduced conditions; showing intact IgG and intact heavy and light chains, respectively. SDS-PAGE analysis confirms the integrity and purity of the antibody.



Western blot analysis of Ramos cell lysate using Anti-NULL Antibody [C86/2160R].