

Anti-CD36 Antibody [185-1G2] (A250686)

Specifications:

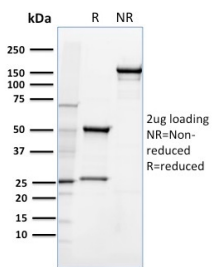
Name:	Anti-CD36 Antibody [185-1G2]
Description:	Mouse monoclonal [185-1G2] antibody to CD36.
Specificity:	This antibody recognizes a protein of 80kDa-90kDa, identified as CD36 (Workshop IV; Code P-26). Its epitope maps between aa155-183. It is expressed on platelets, monocytes and macrophages, microvascular endothelial cells, erythrocyte precursors, mammary epithelial cells, and some macrophage derived dendritic cells. CD36 acts as a receptor for thrombospondin (TSP), collagen types I, IV and V, <i>P. falciparum</i> malaria-infected erythrocytes, and sickle erythrocytes. It also functions as a scavenger receptor, mediating macrophage uptake of oxidized low-density lipoprotein (LDL) and recognition of apoptotic polymorphonuclear leukocytes (PMN). CD36 plays a role in platelet aggregation, macrophage foam cell development, inflammation, and the tissue ischemia observed in sickle cell disease and cerebral malaria. Note that 1-4% of Japanese and East Asia population lack CD36. This MAb blocks adhesion of <i>P. falciparum</i> parasitized red blood cells to CD36 and strongly inhibits collagen-induced platelet aggregation.
Applications:	Functional Studies, Flow Cytometry, IF
Recommended Dilutions:	Flow Cytometry: 1-2 µg/million cells, IF: 1-2 µg/ml
Reactivity:	Human
Immunogen:	Stimulated human leukocytes.
Host:	Mouse
Clonality:	Monoclonal
Clone ID:	185-1G2
Isotype:	IgG2a
Light Chains:	kappa
Conjugate:	Unconjugated
Purification:	Protein A/G chromatography.
Concentration:	200 µg/ml
Product Form:	Liquid
Formulation:	Supplied in 10mM Phosphate Buffered Saline with 0.05% BSA and 0.05% Sodium Azide.
Storage:	Shipped at 4°C. Upon delivery aliquot and store at -20°C. Avoid freeze / thaw cycles.

Anti-CD36 Antibody [185-1G2] (A250686)

Specifications continued:

General Notes:	This monoclonal antibody is also available in a different formulation without BSA and Sodium Azide - Anti-CD36 Antibody [185-1G2] - BSA and Azide free (A253866).
Disclaimer:	This product is for research use only. It is not intended for diagnostic or therapeutic use.

Images:



SDS-PAGE analysis of Anti-CD36 Antibody [185-1G2] under non-reduced and reduced conditions; showing intact IgG and intact heavy and light chains, respectively. SDS-PAGE analysis confirms the integrity and purity of the antibody.