

Anti-CD68 Antibody [C68/684] (A250759)

Specifications:

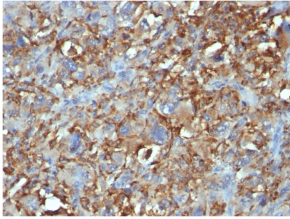
Name:	Anti-CD68 Antibody [C68/684]
Description:	Mouse monoclonal [C68/684] antibody to CD68.
Specificity:	This antibody recognizes a glycoprotein of 110kDa, which is identified as CD68. It is important for identifying macrophages in tissue sections. It stains macrophages in a wide variety of human tissues, including Kupffer cells and macrophages in the red pulp of the spleen, in lamina propria of the gut, in lung alveoli, and in bone marrow. It reacts with myeloid precursors and peripheral blood granulocytes. It also reacts with plasmacytoid T cells, which are supposed to be of monocyte/macrophage origin. It shows strong granular cytoplasmic staining of chronic and acute myeloid leukemia and also reacts with rare cases of true histiocyticneoplasia. Lymphomas are negative or show few granules.
Applications:	WB, IF, Flow Cytometry, IHC-P
Recommended Dilutions:	WB: 1-2 µg/ml, IF: 1-2 µg/ml, Flow Cytometry: 1-2 µg/million cells, IHC-P: 1-2 µg/ml
Reactivity:	Human, Monkey, Mouse, Rat
Immunogen:	Recombinant human CD68 protein.
Host:	Mouse
Clonality:	Monoclonal
Clone ID:	C68/684
Isotype:	IgG1
Light Chains:	kappa
Conjugate:	Unconjugated
Purification:	Protein A/G chromatography.
Concentration:	200 µg/ml
Product Form:	Liquid
Formulation:	Supplied in 10mM Phosphate Buffered Saline with 0.05% BSA and 0.05% Sodium Azide.
Storage:	Shipped at 4°C. Upon delivery aliquot and store at -20°C. Avoid freeze / thaw cycles.
General Notes:	This monoclonal antibody is also available in a different formulation without BSA and Sodium Azide - Anti-CD68 Antibody [C68/684] - BSA and Azide free (A253939).

Anti-CD68 Antibody [C68/684] (A250759)

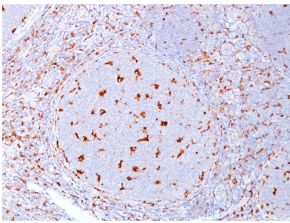
Specifications continued:

Disclaimer: This product is for research use only. It is not intended for diagnostic or therapeutic use.

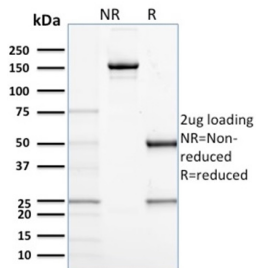
Images:



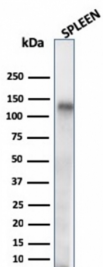
Immunohistochemical analysis of formalin-fixed, paraffin-embedded human histiocytoma using Anti-CD68 Antibody [C68/684].



Immunohistochemical analysis of formalin-fixed, paraffin-embedded human tonsil using Anti-CD68 Antibody [C68/684].



SDS-PAGE analysis of Anti-CD68 Antibody [C68/684] under non-reduced and reduced conditions; showing intact IgG and intact heavy and light chains, respectively. SDS-PAGE analysis confirms the integrity and purity of the antibody.



Western blot analysis of human spleen tissue lysate using Anti-CD68 Antibody [C68/684].