

Anti-CREB5 Antibody [PCRP-CREB5-1G8] (A250809)

Specifications:

Name:	Anti-CREB5 Antibody [PCRP-CREB5-1G8]
Description:	Mouse monoclonal [PCRP-CREB5-1G8] antibody to CREB5.
Specificity:	The ATF/CREB family consists of a series of transcription factors that function by binding to the cAMP responsive element (CRE) palindromic octanucleotide, TGACCTCA. The best characterized members of this gene family include CREB-1, CREB-2 (also designated ATF-4), CRE-BPa, LZIP (also designated CREB-3 and Luman), CREM-2, ATF-1, ATF-2, ATF-3, ATF-5, ATF-6 and ATF-7. These transcription factors share terminal leucine zipper dimerization and basic DNA binding domains and are highly variable in their N-termini. Although each of the ATF/ CREB proteins bind CREs in their homodimeric form, they can also bind as heterodimers, both within the ATF/CREB family and with members of the AP-1 transcription factor family. Protein kinase A- mediated CREB phosphorylation induces association with a nuclear protein designated CBP (CREB-binding protein), which may represent a CREB coactivator. CRE-BPa is a nuclear protein that binds DNA as a homodimer but can also form a heterodimer with ATF-2 or Jun.
Applications:	Flow Cytometry, IF, WB
Recommended Dilutions:	Flow Cytometry: 1-2 µg/million cells, IF: 1-2 µg/ml, WB: 1-2 µg/ml
Reactivity:	Human
Cross Reactivity:	This antibody is predicted to cross react with Mouse and Rat.
Immunogen:	Recombinant full-length human CREB5 protein.
Host:	Mouse
Clonality:	Monoclonal
Clone ID:	PCRP-CREB5-1G8
Isotype:	IgG2b
Light Chains:	kappa
Conjugate:	Unconjugated
Purification:	Protein A/G chromatography.
Concentration:	200 µg/ml
Product Form:	Liquid
Formulation:	Supplied in 10mM Phosphate Buffered Saline with 0.05% BSA and 0.05% Sodium Azide.
Storage:	Shipped at 4°C. Upon delivery aliquot and store at -20°C. Avoid freeze / thaw cycles.

Anti-CREB5 Antibody [PCRP-CREB5-1G8] (A250809)

Specifications continued:

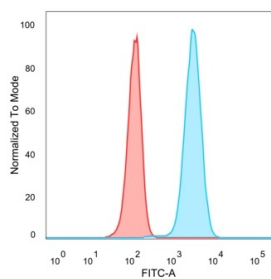
General Notes:

This monoclonal antibody is also available in a different formulation without BSA and Sodium Azide - Anti-CREB5 Antibody [PCRP-CREB5-1G8] - BSA and Azide free (A253989).

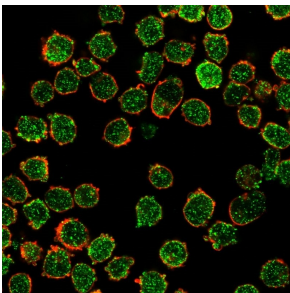
Disclaimer:

This product is for research use only. It is not intended for diagnostic or therapeutic use.

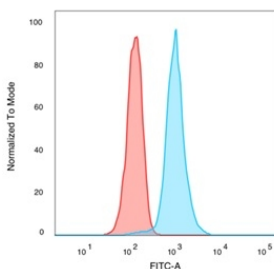
Images:



Flow cytometric analysis of PFA fixed HeLa cells using Anti-CREB5 Antibody [PCRP-CREB5-1G8] followed by Goat Anti-Mouse IgG (CF® 488) (Blue). Unstained cells (red).



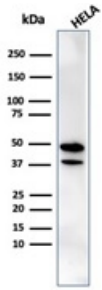
Immunofluorescent analysis of PFA fixed K562 cells stained with Anti-CREB5 Antibody [PCRP-CREB5-1G8] followed by Goat Anti-Mouse IgG (CF® 488) (Green). Counterstain is Phalloidin (Red).



Flow cytometric analysis of PFA fixed K562 cells using Anti-CREB5 Antibody [PCRP-CREB5-1G8] followed by Goat Anti-Mouse IgG (CF® 488) (Blue). Unstained cells (red).

Anti-CREB5 Antibody [PCRP-CREB5-1G8] (A250809)

Images continued:



Western blot analysis of HeLa cell lysate using Anti-CREB5 Antibody [PCRP-CREB5-1G8].