

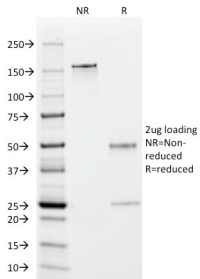
Anti-EBV Early Antigens Antibody [1108-1] (A250843)

Specifications:

Name:	Anti-EBV Early Antigens Antibody [1108-1]
Description:	Mouse monoclonal [1108-1] antibody to EBV Early Antigens.
Applications:	IF
Recommended Dilutions:	IF: 1-2 µg/ml
Reactivity:	Epstein Barr Virus
Immunogen:	Affinity purified early antigen polypeptides from induced Raji cells precipitated with African Burkitt's lymphoma sera.
Host:	Mouse
Clonality:	Monoclonal
Clone ID:	1108-1
Isotype:	IgG1
Light Chains:	kappa
Conjugate:	Unconjugated
Purification:	Protein A/G chromatography.
Concentration:	200 µg/ml
Product Form:	Liquid
Formulation:	Supplied in 10mM Phosphate Buffered Saline with 0.05% BSA and 0.05% Sodium Azide.
Storage:	Shipped at 4°C. Upon delivery aliquot and store at -20°C. Avoid freeze / thaw cycles.
General Notes:	This monoclonal antibody is also available in a different formulation without BSA and Sodium Azide - Anti-EBV Early Antigens Antibody [1108-1] - BSA and Azide free (A254023).
Disclaimer:	This product is for research use only. It is not intended for diagnostic or therapeutic use.

Anti-EBV Early Antigens Antibody [1108-1] (A250843)

Images:



SDS-PAGE analysis of Anti-EBV Early Antigens Antibody [1108-1] under non-reduced and reduced conditions; showing intact IgG and intact heavy and light chains, respectively. SDS-PAGE analysis confirms the integrity and purity of the antibody.