

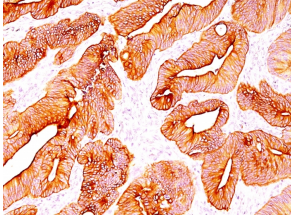
## Anti-pan Cytokeratin Antibody [C11] (A250873)

### Specifications:

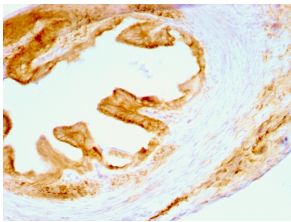
Name:	Anti-pan Cytokeratin Antibody [C11]
Description:	Mouse monoclonal [C11] antibody to pan Cytokeratin.
Specificity:	This antibody recognizes cytokeratin 4, 5, 6, 8, 10, 13, and 18. This is a broad-spectrum antibody, which has been reported to differentiate epithelial tumors from non-epithelial tumors. Many studies have shown the usefulness of keratins as markers in cancer research and tumor diagnosis.
Applications:	Flow Cytometry, IF, WB, IHC-P
Recommended Dilutions:	Flow Cytometry: 1-2 µg/million cells, IF: 1-4 µg/ml, WB: 1-2 µg/ml, IHC-P: 1-2 µg/ml
Reactivity:	Human, Bovine, Rat, Mouse, Guinea Pig, Frog, Goat, Marmoset, Porcine
Immunogen:	Keratin-enriched preparation from cultured human A431.
Host:	Mouse
Clonality:	Monoclonal
Clone ID:	C11
Isotype:	IgG1
Light Chains:	kappa
Conjugate:	Unconjugated
Purification:	Protein A/G chromatography.
Concentration:	200 µg/ml
Product Form:	Liquid
Formulation:	Supplied in 10mM Phosphate Buffered Saline with 0.05% BSA and 0.05% Sodium Azide.
Storage:	Shipped at 4°C. Upon delivery aliquot and store at -20°C. Avoid freeze / thaw cycles.
General Notes:	This monoclonal antibody is also available in a different formulation without BSA and Sodium Azide - Anti-pan Cytokeratin Antibody [C11] - BSA and Azide free (A254053).
Disclaimer:	This product is for research use only. It is not intended for diagnostic or therapeutic use.

## Anti-pan Cytokeratin Antibody [C11] (A250873)

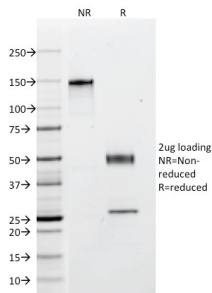
### Images:



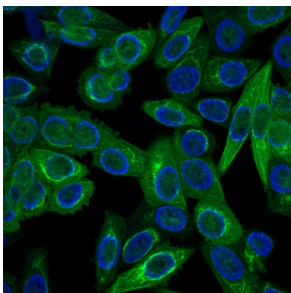
Immunohistochemical analysis of formalin-fixed, paraffin-embedded human colon carcinoma using Anti-pan Cytokeratin Antibody [C11].



Immunohistochemical analysis of formalin-fixed, paraffin-embedded rat oviduct using Anti-pan Cytokeratin Antibody [C11].



SDS-PAGE analysis of Anti-pan Cytokeratin Antibody [C11] under non-reduced and reduced conditions; showing intact IgG and intact heavy and light chains, respectively. SDS-PAGE analysis confirms the integrity and purity of the antibody.



Immunofluorescent analysis of HeLa cells stained with Anti-pan Cytokeratin Antibody [C11] (CF® 647R) (Green). Nuclei are counter stained with DAPI (Blue).