

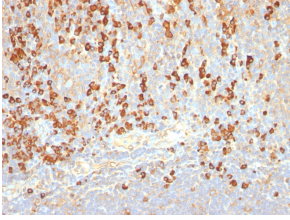
Anti-Plasma Cell Antibody [LIV3G11] (A250879)

Specifications:

Name:	Anti-Plasma Cell Antibody [LIV3G11]
Description:	Mouse monoclonal [LIV3G11] antibody to Plasma Cell.
Specificity:	This antibody recognizes an intra-cytoplasmic antigen; this antigen is present in normal as well as neoplastic plasma cells. This antibody superbly recognizes normal and neoplastic plasma cells in routine formalin-fixed, paraffin-embedded tissue sections. It is of potential value in identifying myeloma or plasmacytoma in bone marrow or other tissues. It also helps differentiate lympho-plasmacytoid lymphoma from lymphocytic and follicular lymphoma. Please note, this antibody is not suitable for staining frozen tissues.
Applications:	IHC-P
Recommended Dilutions:	IHC-P: 0.1-0.2 µg/ml
Reactivity:	Human
Cross Reactivity:	This antibody does not cross react with Rat.
Immunogen:	Pancreatic cancer-related mucin.
Host:	Mouse
Clonality:	Monoclonal
Clone ID:	LIV3G11
Isotype:	IgG2a
Light Chains:	kappa
Conjugate:	Unconjugated
Purification:	Protein A/G chromatography.
Concentration:	200 µg/ml
Product Form:	Liquid
Formulation:	Supplied in 10mM Phosphate Buffered Saline with 0.05% BSA and 0.05% Sodium Azide.
Storage:	Shipped at 4°C. Upon delivery aliquot and store at -20°C. Avoid freeze / thaw cycles.
General Notes:	This antibody is also known as Clone 7B18. This monoclonal antibody is also available in a different formulation without BSA and Sodium Azide - Anti-Plasma Cell Antibody [LIV3G11] - BSA and Azide free (A254059).
Disclaimer:	This product is for research use only. It is not intended for diagnostic or therapeutic use.

Anti-Plasma Cell Antibody [LIV3G11] (A250879)

Images:



Immunohistochemical analysis of formalin-fixed, paraffin-embedded human tonsil using Anti-Plasma Cell Antibody [LIV3G11].