

Anti-pan Cytokeratin Antibody [Cocktail PAN-CK] (A250892)

Specifications:

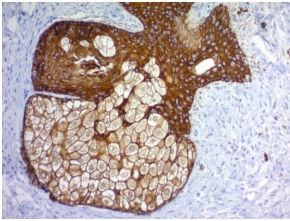
Name:	Anti-pan Cytokeratin Antibody [Cocktail PAN-CK]
Description:	Mouse monoclonal [Cocktail PAN-CK] antibody to pan Cytokeratin.
Specificity:	Twenty human keratins are resolved with two-dimensional gel electrophoresis into acidic (pI 6.0) subfamilies. This antibody cocktail recognizes acidic (Type I or LMW) and basic (Type II or HMW) cytokeratins, with 67kDa (CK1); 64kDa (CK3); 59kDa (CK4); 58kDa (CK5); 56kDa (CK6); 55kDa (CK7); 52kDa (CK8); 56.5kDa (CK10); 53kDa (CK13); 50kDa (CK14); 50kDa (CK15); 48kDa (CK16); 46kDa (CK17); 45kDa (CK18) and 40kDa (CK19). Many studies have shown the usefulness of keratins as markers in cancer research and tumor diagnosis. KRT-PAN is a broad spectrum anti pan-cytokeratin antibody cocktail, which differentiates epithelial tumors from non-epithelial tumors e.g. squamous vs. adenocarcinoma of the lung, liver carcinoma, breast cancer, and esophageal cancer. It is useful in characterizing the source of various neoplasms and to study the distribution of cytokeratin containing cells in epithelia during normal development and during the development of epithelial neoplasms. This antibody stains cytokeratins present in normal and abnormal human tissues and shows high sensitivity in the recognition of epithelial cells and carcinomas.
Applications:	Flow Cytometry, IHC-P
Recommended Dilutions:	Flow Cytometry: 1-2 µg/million cells, IHC-P: 1-2 µg/ml
Reactivity:	Human, Monkey, Bovine, Canine, Rabbit, Mouse, Rat, Chicken
Immunogen:	Human epidermal keratin.
Host:	Mouse
Clonality:	Monoclonal
Clone ID:	Cocktail PAN-CK
Isotype:	IgG1
Light Chains:	kappa
Conjugate:	Unconjugated
Purification:	Protein A/G chromatography.
Concentration:	200 µg/ml
Product Form:	Liquid
Formulation:	Supplied in 10mM Phosphate Buffered Saline with 0.05% BSA and 0.05% Sodium Azide.

Anti-pan Cytokeratin Antibody [Cocktail PAN-CK] (A250892)

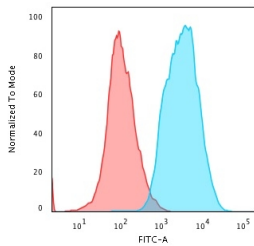
Specifications continued:

Storage:	Shipped at 4°C. Upon delivery aliquot and store at -20°C. Avoid freeze / thaw cycles.
General Notes:	This monoclonal antibody is also available in a different formulation without BSA and Sodium Azide - Anti-pan Cytokeratin Antibody [Cocktail PAN-CK] - BSA and Azide free (A254072).
Disclaimer:	This product is for research use only. It is not intended for diagnostic or therapeutic use.

Images:



Immunohistochemical analysis of formalin-fixed, paraffin-embedded human basal cell carcinoma using Anti-pan Cytokeratin Antibody [Cocktail PAN-CK].



Flow cytometric analysis of human HeLa cells using Anti-pan Cytokeratin Antibody [Cocktail PAN-CK] followed by Goat Anti-Mouse IgG (CF® 488) (Blue). Isotype Control (Red).