

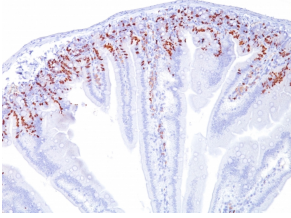
## Anti-BrdU Antibody [SPM537] (A250945)

### Specifications:

Name:	Anti-BrdU Antibody [SPM537]
Description:	Mouse monoclonal [SPM537] antibody to BrdU.
Specificity:	This antibody reacts with Bromodeoxyuridine in single stranded DNA (produced by partial denaturation of double stranded DNA), BrdU coupled to a protein carrier, as well as free BrdU. This antibody is helpful in detecting S-phase cells, providing useful information on the aggressiveness of tumors.
Applications:	Flow Cytometry, IF, IHC-P
Recommended Dilutions:	Flow Cytometry: 1-2 µg/million cells, IF: 1-2 µg/ml, IHC-P: 1-2 µg/ml
Immunogen:	Bromodeoxyuridine conjugated to KLH.
Host:	Mouse
Clonality:	Monoclonal
Clone ID:	SPM537
Isotype:	IgG1
Light Chains:	kappa
Conjugate:	Unconjugated
Purification:	Protein A/G chromatography.
Concentration:	200 µg/ml
Product Form:	Liquid
Formulation:	Supplied in 10mM Phosphate Buffered Saline with 0.05% BSA and 0.05% Sodium Azide.
Storage:	Shipped at 4°C. Upon delivery aliquot and store at -20°C. Avoid freeze / thaw cycles.
General Notes:	This monoclonal antibody is also available in a different formulation without BSA and Sodium Azide - Anti-BrdU Antibody [SPM537] - BSA and Azide free (A254125).
Disclaimer:	This product is for research use only. It is not intended for diagnostic or therapeutic use.

## Anti-BrdU Antibody [SPM537] (A250945)

Images:



Immunohistochemical analysis of formalin-fixed, paraffin-embedded mouse small intestine using Anti-BrdU Antibody [SPM537].