

Anti-Basic Cytokeratin Antibody [SPM591] (A250967)

Specifications:

Name:	Anti-Basic Cytokeratin Antibody [SPM591]
Description:	Mouse monoclonal [SPM591] antibody to Basic Cytokeratin.
Specificity:	This antibody recognizes CK1, CK5, CK10 and CK14. In normal epithelia, it stains stratified epithelia, myoepithelial cells and basal cells in the prostate gland and bronchi. This MAb shows no reactivity with hepatocytes, pancreatic acinar cells, proximal renal tubules, or endometrial glands; there is no reactivity with cells derived from simple epithelia. Mesenchymal tumors, lymphomas, melanomas, neural tumors, and neuroendocrine tumors are negative with this antibody. It stains myoepithelial cells and has been shown to be useful in distinguishing prostate adenocarcinoma from benign prostate. This antibody has also been useful in separating benign from malignant intraductal breast proliferations.
Applications:	Flow Cytometry, IF, WB, IHC-P
Recommended Dilutions:	Flow Cytometry: 1-2 µg/million cells, IF: 1-2 µg/ml, WB: 1-2 µg/ml, IHC-P: 1-2 µg/ml
Reactivity:	Human, Mouse, Rat
Immunogen:	Solubilized keratin extract from human stratum corneum.
Host:	Mouse
Clonality:	Monoclonal
Clone ID:	SPM591
Isotype:	IgG1
Light Chains:	kappa
Conjugate:	Unconjugated
Purification:	Protein A/G chromatography.
Concentration:	200 µg/ml
Product Form:	Liquid
Formulation:	Supplied in 10mM Phosphate Buffered Saline with 0.05% BSA and 0.05% Sodium Azide.
Storage:	Shipped at 4°C. Upon delivery aliquot and store at -20°C. Avoid freeze / thaw cycles.
General Notes:	This monoclonal antibody is also available in a different formulation without BSA and Sodium Azide - Anti-Basic Cytokeratin Antibody [SPM591] - BSA and Azide free (A254147).

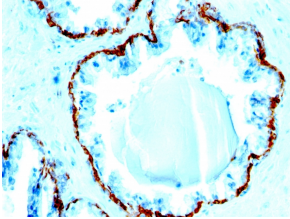
Anti-Basic Cytokeratin Antibody [SPM591] (A250967)

Specifications continued:

Disclaimer:

This product is for research use only. It is not intended for diagnostic or therapeutic use.

Images:



Immunohistochemical analysis of formalin-fixed, paraffin-embedded human prostate carcinoma using Anti-Basic Cytokeratin Antibody [SPM591].