

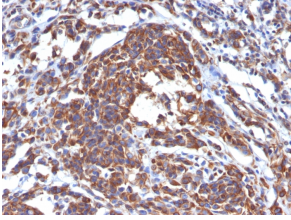
Anti-Vimentin Antibody [LN-6] (A251076)

Specifications:

Name:	Anti-Vimentin Antibody [LN-6]
Description:	Mouse monoclonal [LN-6] antibody to Vimentin.
Specificity:	This antibody reacts with a 58kDa protein identified as vimentin. It reacts with a non-hematopoietic epitope of vimentin and shows no cross-reaction with other closely related intermediate filament proteins (IFPs) such as desmin, keratin, neurofilament, and glial fibrillary acid protein. Vimentin is ubiquitously expressed in mesenchymal cells such as fibroblasts, smooth muscle cells, and endothelium. Antibody against vimentin is useful as part of an antibody panel for differential diagnosis of tumors of unknown origin. Ab-2 does not react with leukocyte common antigen-positive tissues such as lymphomas and leukemias.
Applications:	IHC-P
Recommended Dilutions:	IHC-P: 1-2 µg/ml
Reactivity:	Human, Feline, Bovine, Porcine, Rat, Rabbit, Mouse, Sheep
Immunogen:	Human thymic nuclear extract.
Host:	Mouse
Clonality:	Monoclonal
Clone ID:	LN-6
Isotype:	IgM
Light Chains:	kappa
Conjugate:	Unconjugated
Concentration:	200 µg/ml
Product Form:	Liquid
Formulation:	Supplied in 10mM Phosphate Buffered Saline with 0.05% BSA and 0.05% Sodium Azide.
Storage:	Shipped at 4°C. Upon delivery aliquot and store at -20°C. Avoid freeze / thaw cycles.
General Notes:	This monoclonal antibody is also available in a different formulation without BSA and Sodium Azide - Anti-Vimentin Antibody [LN-6] - BSA and Azide free (A254353).
Disclaimer:	This product is for research use only. It is not intended for diagnostic or therapeutic use.

Anti-Vimentin Antibody [LN-6] (A251076)

Images:



Immunohistochemical analysis of formalin-fixed, paraffin-embedded human melanoma using Anti-Vimentin Antibody [LN-6].