

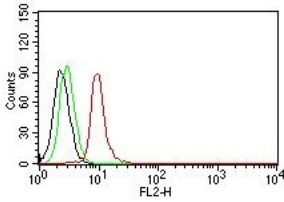
Anti-Cyclin D1 Antibody [DCS-6] (PE) (A251151)

Specifications:

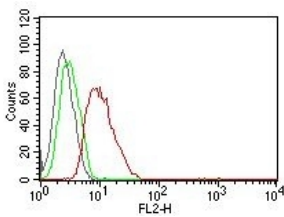
Name:	Anti-Cyclin D1 Antibody [DCS-6] (PE)
Description:	Mouse monoclonal [DCS-6] antibody to Cyclin D1 (PE).
Specificity:	This antibody recognizes a protein of 36kDa, identified as cyclin D1. Cyclin D1, one of the key cell cycle regulators, is a putative proto-oncogene overexpressed in a wide variety of human neoplasms. This antibody neutralizes the activity of cyclin D1 in vivo. About 60% of mantle cell lymphomas (MCL) contain a t(11; 14)(q13; q32) translocation resulting in over-expression of cyclin D1. This antibody is useful in identifying mantle cell lymphomas (cyclin D1 positive) from CLL/SLL and follicular lymphomas (cyclin D1 negative). Occasionally, hairy cell leukemia and plasma cell myeloma weakly express Cyclin D1.
Applications:	Flow Cytometry, IF
Recommended Dilutions:	Flow Cytometry: 5 µl / million cells or 5 µl / 100 µl whole blood, IF: 1:50-1:100
Reactivity:	Human, Monkey, Mouse, Rat
Immunogen:	Recombinant full-length human Cyclin D1 protein.
Host:	Mouse
Clonality:	Monoclonal
Clone ID:	DCS-6
Isotype:	IgG2a
Light Chains:	kappa
Conjugate:	PE
Purification:	Protein A/G chromatography.
Concentration:	100 µg/ml
Product Form:	Liquid
Formulation:	Supplied in 10mM Phosphate Buffered Saline with 0.05% BSA and 0.05% Sodium Azide.
Storage:	Store at 4-8°C. Antibody is stable for 24 months.
Disclaimer:	This product is for research use only. It is not intended for diagnostic or therapeutic use.

Anti-Cyclin D1 Antibody [DCS-6] (PE) (A251151)

Images:



Flow cytometric analysis of Jurkat cells labeling Cyclin D1 with Anti-Cyclin D1 Antibody [DCS-6] (PE) (Red). Cells alone (Black). Isotype Control (Green).



Flow cytometric analysis of MCF-7 cells labeling Cyclin D1 with Anti-Cyclin D1 Antibody [DCS-6] (PE) (Red). Cells alone (Black). Isotype Control (Green).