

Anti-pan Cytokeratin Antibody [SPM115 + SPM116] (PE) (A251200)

Specifications:

Name:	Anti-pan Cytokeratin Antibody [SPM115 + SPM116] (PE)
Description:	Mouse monoclonal [SPM115 + SPM116] antibody to pan Cytokeratin (PE).
Specificity:	Twenty human keratins are resolved with two-dimensional gel electrophoresis into acidic (pI 6.0) subfamilies. This antibody cocktail recognizes acidic (Type I or LMW) and basic (Type II or HMW) cytokeratins, which include CK1, CK3, CK4, CK5, CK6, CK8, CK10, CK14, CK15, CK16, and CK19. Many studies have shown the usefulness of keratins as markers in cancer research and tumor diagnosis. This MAb is a broad spectrum anti pan-cytokeratin antibody cocktail, which differentiates epithelial tumors from non-epithelial tumors e.g. squamous vs. adenocarcinoma of the lung, liver carcinoma, breast cancer, and esophageal cancer. It has been used to characterize the source of various neoplasms and to study the distribution of cytokeratin containing cells in epithelia during normal development and during the development of epithelial neoplasms. This antibody stains cytokeratins present in normal and abnormal human tissues and has shown high sensitivity in the recognition of epithelial cells and carcinomas.
Applications:	Flow Cytometry, IF
Recommended Dilutions:	Flow Cytometry: 5 µl / million cells or 5 µl / 100 µl whole blood, IF: 1:50-1:100
Reactivity:	Human, Monkey, Bovine, Canine, Rabbit, Mouse, Rat, Chicken
Immunogen:	Human epidermal keratin.
Host:	Mouse
Clonality:	Monoclonal
Clone ID:	SPM115 + SPM116
Isotype:	IgG1
Light Chains:	kappa
Conjugate:	PE
Purification:	Protein A/G chromatography.
Concentration:	100 µg/ml
Product Form:	Liquid
Formulation:	Supplied in 10mM Phosphate Buffered Saline with 0.05% BSA and 0.05% Sodium Azide.
Storage:	Store at 4-8°C. Antibody is stable for 24 months.

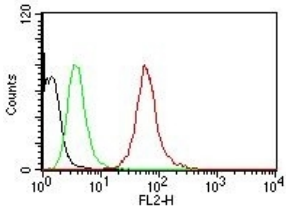
Anti-pan Cytokeratin Antibody [SPM115 + SPM116] (PE) (A251200)

Specifications continued:

Disclaimer:

This product is for research use only. It is not intended for diagnostic or therapeutic use.

Images:



Flow cytometric analysis of HeLa cells labeling pan Cytokeratins with Anti-pan Cytokeratin Antibody [SPM115 + SPM116] (PE) (Red). Cells alone (Black). Isotype Control (Green).