

Anti-p21 Antibody [HJ21] - BSA and Azide free (A251270)

Specifications:

Name:	Anti-p21 Antibody [HJ21] - BSA and Azide free
Description:	Mouse monoclonal [HJ21] antibody to p21.
Specificity:	This antibody recognizes a 21kDa protein, identified as the p21WAF1 tumor suppressor protein. It is highly specific to p21 and shows no cross-reaction with other closely related mitotic inhibitors. p21WAF1 is a specific inhibitor of cdks and a tumor suppressor involved in the pathogenesis of a variety of malignancies. The expression of this gene acts as an inhibitor of the cell cycle during G1 phase and is tightly controlled by the tumor suppressor protein p53. Its expression is induced by the wild type, but not mutant, p53 suppressor protein. Normal cells generally display a rather intense nuclear p21 expression. Loss of p21 expression has been reported in many carcinomas (gastric carcinoma, non-small cell lung carcinoma, thyroid carcinoma).
Applications:	Flow Cytometry, IF, IHC-P
Recommended Dilutions:	Flow Cytometry: 1-2 µg/million cells, IF: 1-2 µg/ml, IHC-P: 1-2 µg/ml
Reactivity:	Human, Monkey, Chimpanzee, Mouse, Rat
Immunogen:	Recombinant human p21 protein.
Host:	Mouse
Clonality:	Monoclonal
Clone ID:	HJ21
Isotype:	IgG1
Light Chains:	kappa
Conjugate:	Unconjugated
Purification:	Protein A/G chromatography.
Concentration:	1 mg/ml
Product Form:	Liquid
Formulation:	Supplied in 10mM Phosphate Buffered Saline; without Sodium Azide and carrier free.
Storage:	Shipped at 4°C. Upon delivery aliquot and store at -20°C. Avoid freeze / thaw cycles.
General Notes:	This monoclonal antibody is also available in a different formulation with BSA and Sodium Azide - Anti-p21 Antibody [HJ21] (A248087).

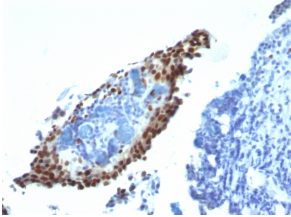
Anti-p21 Antibody [HJ21] - BSA and Azide free (A251270)

Specifications continued:

Disclaimer:

This product is for research use only. It is not intended for diagnostic or therapeutic use.

Images:



Immunohistochemical analysis of formalin-fixed, paraffin-embedded bladder carcinoma using Anti-p21 Antibody [HJ21].