

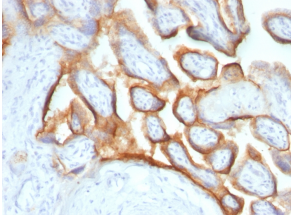
Anti-HCG alpha Antibody [SPM552] - BSA and Azide free (A251348)

Specifications:

Name:	Anti-HCG alpha Antibody [SPM552] - BSA and Azide free
Description:	Mouse monoclonal [SPM552] antibody to HCG alpha.
Specificity:	This antibody reacts with a protein of ~13kDa, identified as alpha sub-unit of HCG. HCG is a glycoprotein, which is secreted in large quantities by normal trophoblasts. It is present only in trace amounts in non-pregnant urine and sera but rises sharply during pregnancy. HCG is composed of two non-identical, non-covalently linked polypeptide chains designated as the subunit is identical to that of thyroid stimulating hormone (TSH) follicle stimulating hormone (FSH), and luteinizing hormone (LH).
Applications:	IHC-P
Recommended Dilutions:	IHC-P: 1-2 µg/ml
Reactivity:	Human
Immunogen:	Recombinant hCG alpha protein.
Host:	Mouse
Clonality:	Monoclonal
Clone ID:	SPM552
Isotype:	IgG1
Light Chains:	kappa
Conjugate:	Unconjugated
Purification:	Protein A/G chromatography.
Concentration:	1 mg/ml
Product Form:	Liquid
Formulation:	Supplied in 10mM Phosphate Buffered Saline; without Sodium Azide and carrier free.
Storage:	Shipped at 4°C. Upon delivery aliquot and store at -20°C. Avoid freeze / thaw cycles.
General Notes:	This monoclonal antibody is also available in a different formulation with BSA and Sodium Azide - Anti-HCG alpha Antibody [SPM552] (A248165).
Disclaimer:	This product is for research use only. It is not intended for diagnostic or therapeutic use.

Anti-HCG alpha Antibody [SPM552] - BSA and Azide free (A251348)

Images:



Immunohistochemical analysis of formalin-fixed, paraffin-embedded human placenta using Anti-HCG alpha Antibody [SPM552].