

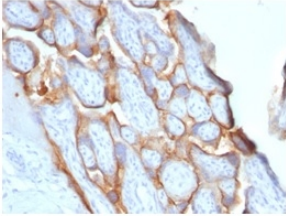
## Anti-HCG beta Antibody [HCGb/1996R] - BSA and Azide free (A251358)

### Specifications:

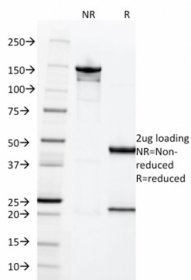
|                        |   |
|------------------------|---|
| Name:                  | Anti-HCG beta Antibody [HCGb/1996R] - BSA and Azide free  |
| Description:           | Recombinant rabbit monoclonal [HCGb/1996R] antibody to HCG beta.  |
| Specificity:           | This antibody reacts with a protein of 22kDa, identified as beta sub-unit of HCG. It does not cross react with the alpha sub-unit. HCG is a glycoprotein, which is secreted in large quantities by normal trophoblasts. It is present only in trace amounts in non-pregnant urine and sera but rises sharply during pregnancy. HCG is composed of two non-identical, non-covalently linked polypeptide chains designated as the subunit is identical to that of thyroid stimulating hormone (TSH) follicle stimulating hormone (FSH), and luteinizing hormone (LH). hCG MAb detects cells and tumors of trophoblastic origin such as choriocarcinoma. Large cell carcinoma and adenocarcinoma of the lung demonstrate anti-hCG positivity in 90% and 60% of cases respectively. 20% of lung squamous cell carcinomas are positive. hCG expression by non-trophoblastic tumors may indicate aggressive behavior. |
| Applications:          | IHC-P   |
| Recommended Dilutions: | IHC-P: 1-2 µg/ml  |
| Reactivity:            | Human   |
| Immunogen:             | Recombinant full-length hCG beta protein.   |
| Host:                  | Rabbit  |
| Clonality:             | Monoclonal  |
| Clone ID:              | HCGb/1996R  |
| Isotype:               | IgG   |
| Conjugate:             | Unconjugated  |
| Purification:          | Protein A/G chromatography.   |
| Concentration:         | 1 mg/ml   |
| Product Form:          | Liquid  |
| Formulation:           | Supplied in 10mM Phosphate Buffered Saline; without Sodium Azide and carrier free.  |
| Storage:               | Shipped at 4°C. Upon delivery aliquot and store at -20°C. Avoid freeze / thaw cycles.   |
| General Notes:         | This monoclonal antibody is also available in a different formulation with BSA and Sodium Azide - Anti-HCG beta Antibody [HCGb/1996R] (A248175).  |
| Disclaimer:            | This product is for research use only. It is not intended for diagnostic or therapeutic use.  |

## Anti-HCG beta Antibody [HCGb/1996R] - BSA and Azide free (A251358)

### Images:



Immunohistochemical analysis of formalin-fixed, paraffin-embedded human placenta using Anti-HCG beta Antibody [HCGb/1996R].



SDS-PAGE analysis of Anti-HCG beta Antibody [HCGb/1996R] under non-reduced and reduced conditions; showing intact IgG and intact heavy and light chains, respectively. SDS-PAGE analysis confirms the integrity and purity of the antibody.