

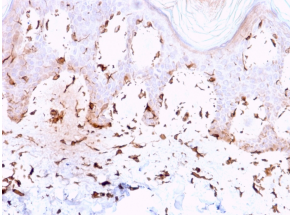
Anti-Collagen VII Antibody [LH7.2] - BSA and Azide free (A251430)

Specifications:

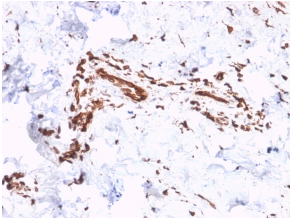
| | |
|------------------------|---|
| Name: | Anti-Collagen VII Antibody [LH7.2] - BSA and Azide free |
| Description: | Mouse monoclonal [LH7.2] antibody to Collagen VII. |
| Specificity: | This antibody recognizes an epitope located on collagenase digested Type VII collagen (150kDa), i.e. the non-helical carboxyl terminal region of the dimer. Binding is localized at the inferior border of the lamina densa as demonstrated by immunoelectron microscopy. Type VII is also found in the retina, where its function is unknown. It interacts with Laminin 5 and Fibronectin. Collagen VII is a stratified squamous epithelial basement membrane protein that forms anchoring fibrils which may contribute to epithelial basement membrane organization and adherence by interacting with extracellular matrix (ECM) proteins such as type IV collagen. |
| Applications: | ELISA, WB, IF, IHC-P |
| Recommended Dilutions: | WB: 1-2 µg/ml, Flow Cytometry: 1-2 µg/million cells, IF: 1-2 µg/ml, IHC-P: 1-2 µg/ml |
| Reactivity: | Human, Sheep, Goat, Horse, Guinea Pig, Bovine |
| Immunogen: | Recombinant full-length human Collagen VII protein. |
| Host: | Mouse |
| Clonality: | Monoclonal |
| Clone ID: | LH7.2 |
| Isotype: | IgG1 |
| Light Chains: | kappa |
| Conjugate: | Unconjugated |
| Purification: | Protein A/G chromatography. |
| Concentration: | 1 mg/ml |
| Product Form: | Liquid |
| Formulation: | Supplied in 10mM Phosphate Buffered Saline; without Sodium Azide and carrier free. |
| Storage: | Shipped at 4°C. Upon delivery aliquot and store at -20°C. Avoid freeze / thaw cycles. |
| General Notes: | This monoclonal antibody is also available in a different formulation with BSA and Sodium Azide - Anti-Collagen VII Antibody [LH7.2] (A248248). |
| Disclaimer: | This product is for research use only. It is not intended for diagnostic or therapeutic use. |

Anti-Collagen VII Antibody [LH7.2] - BSA and Azide free (A251430)

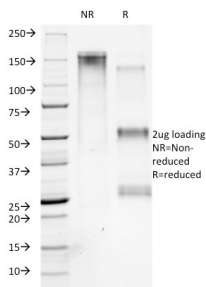
Images:



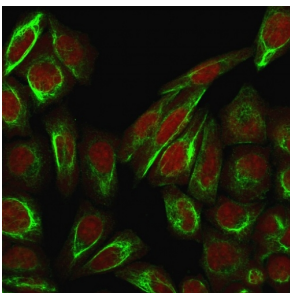
Immunohistochemical analysis of formalin-fixed, paraffin-embedded human skin using Anti-Collagen VII Antibody [LH7.2].



Immunohistochemical analysis of formalin-fixed, paraffin-embedded human skin using Anti-Collagen VII Antibody [LH7.2].



SDS-PAGE analysis of Anti-Collagen VII Antibody [LH7.2] under non-reduced and reduced conditions; showing intact IgG and intact heavy and light chains, respectively. SDS-PAGE analysis confirms the integrity and purity of the antibody.



Immunofluorescent analysis of PFA fixed HeLa cells stained with Anti-Collagen VII Antibody [LH7.2] followed by Goat Anti-Mouse IgG (CF® 488) (Green). The nuclear counterstain is RedDot.