

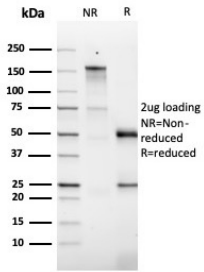
## Anti-GM-CSF Antibody [CSF2/3403] - BSA and Azide free (A251454)

### Specifications:

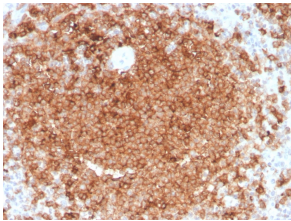
Name:	Anti-GM-CSF Antibody [CSF2/3403] - BSA and Azide free
Description:	Mouse monoclonal [CSF2/3403] antibody to GM-CSF.
Applications:	IHC-P
Recommended Dilutions:	IHC-P: 1-2 µg/ml
Reactivity:	Human
Immunogen:	Recombinant human GM-CSF protein.
Host:	Mouse
Clonality:	Monoclonal
Clone ID:	CSF2/3403
Isotype:	IgG2b
Light Chains:	kappa
Conjugate:	Unconjugated
Purification:	Protein A/G chromatography.
Concentration:	1 mg/ml
Product Form:	Liquid
Formulation:	Supplied in 10mM Phosphate Buffered Saline; without Sodium Azide and carrier free.
Storage:	Shipped at 4°C. Upon delivery aliquot and store at -20°C. Avoid freeze / thaw cycles.
General Notes:	This monoclonal antibody is also available in a different formulation with BSA and Sodium Azide - Anti-GM-CSF Antibody [CSF2/3403] (A248272).
Disclaimer:	This product is for research use only. It is not intended for diagnostic or therapeutic use.

## Anti-GM-CSF Antibody [CSF2/3403] - BSA and Azide free (A251454)

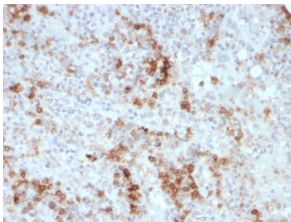
Images:



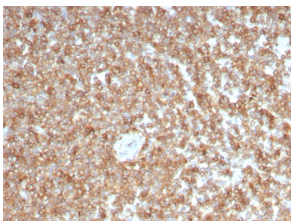
SDS-PAGE analysis of Anti-GM-CSF Antibody [CSF2/3403] under non-reduced and reduced conditions; showing intact IgG and intact heavy and light chains, respectively. SDS-PAGE analysis confirms the integrity and purity of the antibody.



Immunohistochemical analysis of formalin-fixed, paraffin-embedded human spleen using Anti-GM-CSF Antibody [CSF2/3403].



Immunohistochemical analysis of formalin-fixed, paraffin-embedded human spleen using Anti-GM-CSF Antibody [CSF2/3403].



Immunohistochemical analysis of formalin-fixed, paraffin-embedded human spleen using Anti-GM-CSF Antibody [CSF2/3403].