

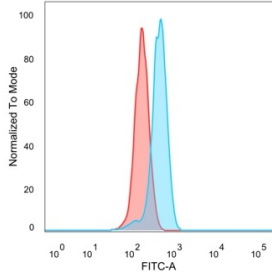
Anti-CTBP2 Antibody [PCRP-CTBP2-2D11] - BSA and Azide free (A251468)

Specifications:

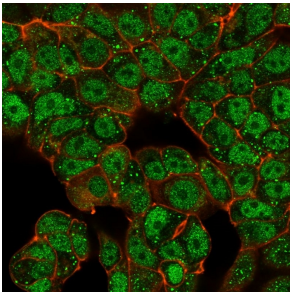
Name:	Anti-CTBP2 Antibody [PCRP-CTBP2-2D11] - BSA and Azide free
Description:	Mouse monoclonal [PCRP-CTBP2-2D11] antibody to CTBP2.
Specificity:	The gene CTBP2 (C-terminal binding protein 2) encodes a member of the CtBP-family. The gene is mapped to human chromosome 21q21.3. It is found to be expressed ubiquitously, with higher expression in the heart, skeletal muscle, and pancreas. The gene CTBP2 (C-terminal binding protein 2) encodes a protein that functions as a transcriptional co-repressor of several tumor suppressor genes resulting in enhanced cancer cell migration and invasion. Its expression is found to be upregulated in hepatocellular carcinoma (HCC). It may be a potential prognostic marker for post liver resection HCC. It is involved in several types of tumor initiation, progression and response to therapy. It is found to interact with the C-terminal region of adenovirus type 2/5 E1A protein, a region that negatively regulates tumorigenicity and the extent of oncogenic transformation.
Applications:	Flow Cytometry, IF
Recommended Dilutions:	Flow Cytometry: 1-2 µg/million cells, IF: 1-2 µg/ml
Reactivity:	Human
Immunogen:	Recombinant full-length human CTBP2 protein.
Host:	Mouse
Clonality:	Monoclonal
Clone ID:	PCRP-CTBP2-2D11
Isotype:	IgG2b
Conjugate:	Unconjugated
Purification:	Protein A/G chromatography.
Concentration:	1 mg/ml
Product Form:	Liquid
Formulation:	Supplied in 10mM Phosphate Buffered Saline; without Sodium Azide and carrier free.
Storage:	Shipped at 4°C. Upon delivery aliquot and store at -20°C. Avoid freeze / thaw cycles.
General Notes:	This monoclonal antibody is also available in a different formulation with BSA and Sodium Azide - Anti-CTBP2 Antibody [PCRP-CTBP2-2D11] (A248286).
Disclaimer:	This product is for research use only. It is not intended for diagnostic or therapeutic use.

Anti-CTBP2 Antibody [PCRP-CTBP2-2D11] - BSA and Azide free (A251468)

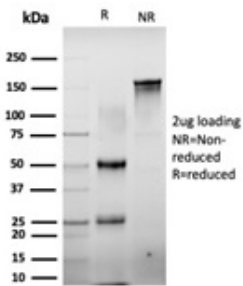
Images:



Flow cytometric analysis of PFA fixed HeLa cells using Anti-CTBP2 Antibody [PCRP-CTBP2-2D11] followed by Goat Anti-Mouse IgG (CF® 488) (Blue). Unstained cells (red).



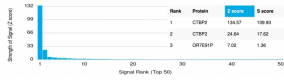
Immunofluorescent analysis of MCF-7 cells stained with Anti-CTBP2 Antibody [PCRP-CTBP2-2D11] followed by Goat Anti-Mouse IgG (CF® 488) (Green). Counterstain is Phalloidin (Red).



SDS-PAGE analysis of Anti-CTBP2 Antibody [PCRP-CTBP2-2D11] under non-reduced and reduced conditions; showing intact IgG and intact heavy and light chains, respectively. SDS-PAGE analysis confirms the integrity and purity of the antibody.

Anti-CTBP2 Antibody [PCR-CTBP2-2D11] - BSA and Azide free (A251468)

Images continued:



Analysis of protein array containing more than 19,000 full-length human proteins using Anti-CTBP2 Antibody [PCR-CTBP2-2D11]. Z-Score and S- Score: The Z-score represents the strength of a signal that a monoclonal antibody (MAb) (in combination with a fluorescently-tagged anti-IgG secondary antibody) produces when binding to a particular protein on the HuProt™ array. Z-scores are described in units of standard deviations (SD's) above the mean value of all signals generated on that array. If targets on HuProt™ are arranged in descending order of the Z-score, the S-score is the difference (also in units of SD's) between the Z-score. S-score therefore represents the relative target specificity of a MAb to its intended target; a MAb is considered to be specific to its intended target, if the MAb has an S-score of at least 2.5. For example, if a MAb binds to protein X with a Z-score of 43 and to protein Y with a Z-score of 14, then the S-score for the binding of that MAb to protein X is equal to 29.