

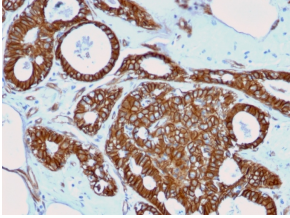
Anti-beta Catenin Antibody [rCTNNB1/2173] - BSA and Azide free (A251473)

Specifications:

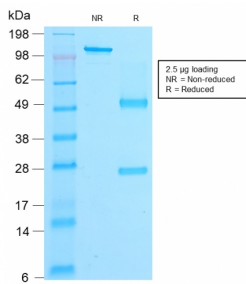
Name:	Anti-beta Catenin Antibody [rCTNNB1/2173] - BSA and Azide free
Description:	Recombinant mouse monoclonal [rCTNNB1/2173] antibody to beta Catenin.
Applications:	IF, WB, IHC-P
Recommended Dilutions:	IF: 1-2 µg/ml, WB: 1-2 µg/ml, IHC-P: 1-2 µg/ml
Reactivity:	Human, Mouse, Rat
Immunogen:	Recombinant full-length human beta Catenin protein.
Host:	Mouse
Clonality:	Monoclonal
Clone ID:	rCTNNB1/2173
Isotype:	IgG1
Light Chains:	kappa
Conjugate:	Unconjugated
Purification:	Protein A/G chromatography.
Concentration:	1 mg/ml
Product Form:	Liquid
Formulation:	Supplied in 10mM Phosphate Buffered Saline; without Sodium Azide and carrier free.
Storage:	Shipped at 4°C. Upon delivery aliquot and store at -20°C. Avoid freeze / thaw cycles.
General Notes:	This monoclonal antibody is also available in a different formulation with BSA and Sodium Azide - Anti-beta Catenin Antibody [rCTNNB1/2173] (A248291).
Disclaimer:	This product is for research use only. It is not intended for diagnostic or therapeutic use.

Anti-beta Catenin Antibody [rCTNNB1/2173] - BSA and Azide free (A251473)

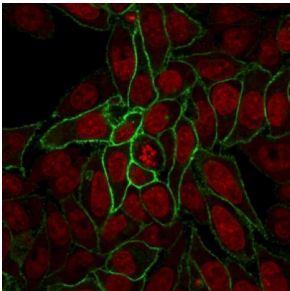
Images:



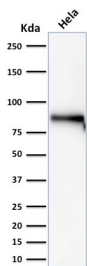
Immunohistochemical analysis of formalin-fixed, paraffin-embedded human breast cancer using Anti-beta Catenin Antibody [rCTNNB1/2173].



SDS-PAGE analysis of Anti-beta Catenin Antibody [rCTNNB1/2173] under non-reduced and reduced conditions; showing intact IgG and intact heavy and light chains, respectively. SDS-PAGE analysis confirms the integrity and purity of the antibody.



Immunofluorescent analysis of HeLa cells stained with Anti-beta Catenin Antibody [rCTNNB1/2173] (CF® 488) (Green). Nuclear counterstain is RedDot.



Western blot analysis of HeLa cell lysate using Anti-beta Catenin Antibody [rCTNNB1/2173].