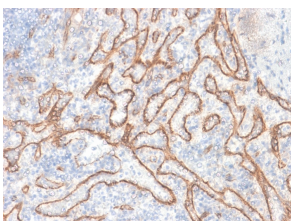


Anti-beta Catenin Antibody [CTNNB1/2030R] - BSA and Azide free (A251483)

Specifications:

Name:	Anti-beta Catenin Antibody [CTNNB1/2030R] - BSA and Azide free
Description:	Recombinant rabbit monoclonal [CTNNB1/2030R] antibody to beta Catenin.
Applications:	Flow Cytometry, IF, WB, IHC-P
Recommended Dilutions:	Flow Cytometry: 1-2 µg/million cells, IF: 1-2 µg/ml, WB: 1-2 µg/ml, IHC-P: 1-2 µg/ml
Reactivity:	Human
Immunogen:	Recombinant full-length human beta Catenin protein.
Host:	Rabbit
Clonality:	Monoclonal
Clone ID:	CTNNB1/2030R
Isotype:	IgG
Conjugate:	Unconjugated
Purification:	Protein A chromatography.
Concentration:	1 mg/ml
Product Form:	Liquid
Formulation:	Supplied in 10mM Phosphate Buffered Saline; without Sodium Azide and carrier free.
Storage:	Shipped at 4°C. Upon delivery aliquot and store at -20°C. Avoid freeze / thaw cycles.
General Notes:	This monoclonal antibody is also available in a different formulation with BSA and Sodium Azide - Anti-beta Catenin Antibody [CTNNB1/2030R] (A248301).
Disclaimer:	This product is for research use only. It is not intended for diagnostic or therapeutic use.

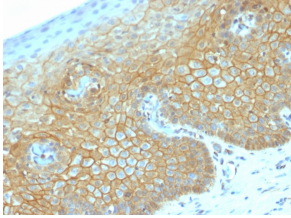
Images:



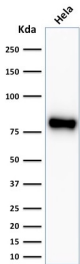
Immunohistochemical analysis of formalin-fixed, paraffin-embedded human tonsil using Anti-beta Catenin Antibody [CTNNB1/2030R].

Anti-beta Catenin Antibody [CTNNB1/2030R] - BSA and Azide free (A251483)

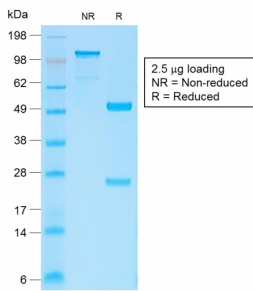
Images continued:



Immunohistochemical analysis of formalin-fixed, paraffin-embedded human cervical carcinoma using Anti-beta Catenin Antibody [CTNNB1/2030R].



Western blot analysis of HeLa cell lysate using Anti-beta Catenin Antibody [CTNNB1/2030R].



SDS-PAGE analysis of Anti-beta Catenin Antibody [CTNNB1/2030R] under non-reduced and reduced conditions; showing intact IgG and intact heavy and light chains, respectively. SDS-PAGE analysis confirms the integrity and purity of the antibody.