

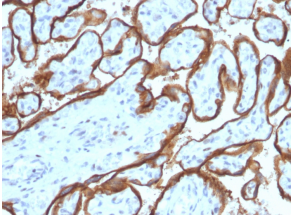
Anti-EGFR Antibody [SPM341] - BSA and Azide free (A251576)

Specifications:

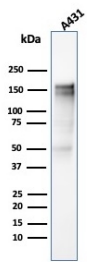
Name:	Anti-EGFR Antibody [SPM341] - BSA and Azide free
Description:	Mouse monoclonal [SPM341] antibody to EGFR.
Specificity:	This antibody recognizes a protein of 170kDa, identified as EGFR. EGFR is type I receptor tyrosine kinase with sequence homology to erbB-1, -2, -3 -4 or HER-1, -2, -3 -4. It binds to Epidermal Growth Factor (EGF), Transforming Growth Factor- α (TGF- α), Heparin-binding EGF (HB-EGF), amphiregulin, betacellulin and epiregulin. EGFR is overexpressed in tumors of breast, brain, bladder, lung, gastric, head neck, esophagus, cervix, vulva, ovary, and endometrium. It is predominantly present in squamous cell carcinomas.
Applications:	Flow Cytometry, IF, WB, IHC-P
Recommended Dilutions:	Flow Cytometry: 1-2 μ g/million cells, IF: 1-2 μ g/ml, WB: 1-2 μ g/ml, IHC-P: 1-2 μ g/ml
Reactivity:	Human
Immunogen:	Recombinant fragment, around amino acids 344-492, of human EGFR protein. The exact sequence is proprietary.
Host:	Mouse
Clonality:	Monoclonal
Clone ID:	SPM341
Isotype:	IgG2b
Light Chains:	kappa
Conjugate:	Unconjugated
Purification:	Protein A/G chromatography.
Concentration:	1 mg/ml
Product Form:	Liquid
Formulation:	Supplied in 10mM Phosphate Buffered Saline; without Sodium Azide and carrier free.
Storage:	Shipped at 4°C. Upon delivery aliquot and store at -20°C. Avoid freeze / thaw cycles.
General Notes:	This monoclonal antibody is also available in a different formulation with BSA and Sodium Azide - Anti-EGFR Antibody [SPM341] (A248394).
Disclaimer:	This product is for research use only. It is not intended for diagnostic or therapeutic use.

Anti-EGFR Antibody [SPM341] - BSA and Azide free (A251576)

Images:



Immunohistochemical analysis of formalin-fixed, paraffin-embedded human placenta using Anti-EGFR Antibody [SPM341].



Western blot analysis of A431 cell lysate using Anti-EGFR Antibody [SPM341].