

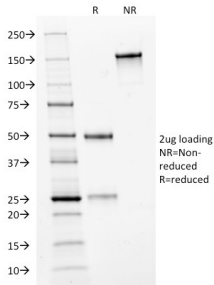
## Anti-HER2 Antibody [HRB2/282] - BSA and Azide free (A251636)

### Specifications:

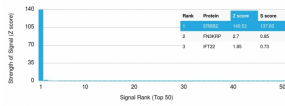
Name:	Anti-HER2 Antibody [HRB2/282] - BSA and Azide free
Description:	Mouse monoclonal [HRB2/282] antibody to HER2.
Specificity:	This antibody recognizes a protein of 185kDa, which is identified as c-erbB-2/HER-2/neu. Its epitope is localized in the extracellular domain. C-erbB-2/HER-2 is a member of the EGFR family. This MAb is specific and shows minimal cross-reaction with other members of the EGFR-family. Receptors of this family are located on the plasma membrane and consist of an extracellular ligand-binding domain that is connected to a large intracellular domain by a single transmembrane sequence. c-erbB-2/HER-2 protein is over-expressed in a variety of carcinomas especially those of breast and ovary.
Applications:	ELISA, Flow Cytometry, IF
Recommended Dilutions:	Flow Cytometry: 1-2 µg/million cells, IF: 1-2 µg/ml
Reactivity:	Human
Immunogen:	Recombinant extracellular domain of human HER-2 protein.
Host:	Mouse
Clonality:	Monoclonal
Clone ID:	HRB2/282
Isotype:	IgG1
Light Chains:	kappa
Conjugate:	Unconjugated
Purification:	Protein A/G chromatography.
Concentration:	1 mg/ml
Product Form:	Liquid
Formulation:	Supplied in 10mM Phosphate Buffered Saline; without Sodium Azide and carrier free.
Storage:	Shipped at 4°C. Upon delivery aliquot and store at -20°C. Avoid freeze / thaw cycles.
General Notes:	This monoclonal antibody is also available in a different formulation with BSA and Sodium Azide - Anti-HER2 Antibody [HRB2/282] (A248454).
Disclaimer:	This product is for research use only. It is not intended for diagnostic or therapeutic use.

# Anti-HER2 Antibody [HRB2/282] - BSA and Azide free (A251636)

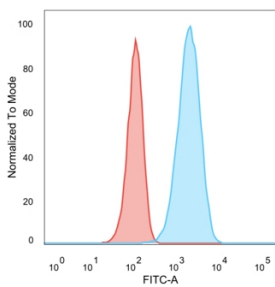
## Images:



SDS-PAGE analysis of Anti-HER2 Antibody [HRB2/282] under non-reduced and reduced conditions; showing intact IgG and intact heavy and light chains, respectively. SDS-PAGE analysis confirms the integrity and purity of the antibody.



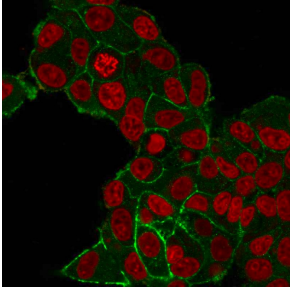
Analysis of protein array containing more than 19,000 full-length human proteins using Anti-HER2 Antibody [HRB2/282]. Z-Score and S- Score: The Z-score represents the strength of a signal that a monoclonal antibody (MAb) (in combination with a fluorescently-tagged anti-IgG secondary antibody) produces when binding to a particular protein on the HuProt™ array. Z-scores are described in units of standard deviations (SD's) above the mean value of all signals generated on that array. If targets on HuProt™ are arranged in descending order of the Z-score, the S-score is the difference (also in units of SD's) between the Z-score. S-score therefore represents the relative target specificity of a MAb to its intended target; a MAb is considered to be specific to its intended target, if the MAb has an S-score of at least 2.5. For example, if a MAb binds to protein X with a Z-score of 43 and to protein Y with a Z-score of 14, then the S-score for the binding of that MAb to protein X is equal to 29.



Flow cytometric analysis of trypsinized PFA fixed MCF-7 cells using Anti-HER2 Antibody [HRB2/282] followed by Goat Anti-Mouse IgG (CF® 488) (Blue). Isotype Control (Red).

## Anti-HER2 Antibody [HRB2/282] - BSA and Azide free (A251636)

Images continued:



Immunofluorescent analysis of PFA fixed MCF-7 cells stained with Anti-HER2 Antibody [HRB2/282] followed by Goat Anti-Mouse IgG (CF® 488) (Green). Nuclear counterstain is RedDot.