

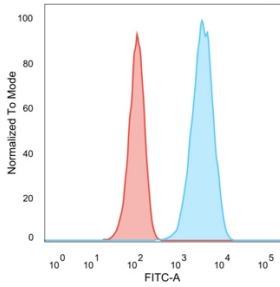
Anti-HER2 Antibody [ERB2/776] - BSA and Azide free (A251638)

Specifications:

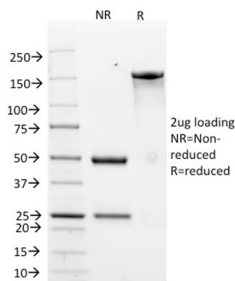
Name:	Anti-HER2 Antibody [ERB2/776] - BSA and Azide free
Description:	Mouse monoclonal [ERB2/776] antibody to HER2.
Specificity:	This antibody is specific to c-erbB-2/HER-2 and shows minimal cross-reaction with other members of the family. C-erbB-2/HER-2 is a member of the EGFR family. Receptors of this family are located on the plasma membrane and consist of an extracellular ligand-binding domain that is connected to a large intracellular domain by a single transmembrane sequence. c-erbB-2/HER-2 protein is over-expressed in a variety of carcinomas especially those of breast and ovary.
Applications:	ELISA, Flow Cytometry, IF
Recommended Dilutions:	Flow Cytometry: 1-2 µg/million cells, IF: 1-2 µg/ml
Reactivity:	Human
Immunogen:	Recombinant intracellular domain of human HER2 protein.
Host:	Mouse
Clonality:	Monoclonal
Clone ID:	ERB2/776
Isotype:	IgG1
Light Chains:	kappa
Conjugate:	Unconjugated
Purification:	Protein A/G chromatography.
Concentration:	1 mg/ml
Product Form:	Liquid
Formulation:	Supplied in 10mM Phosphate Buffered Saline; without Sodium Azide and carrier free.
Storage:	Shipped at 4°C. Upon delivery aliquot and store at -20°C. Avoid freeze / thaw cycles.
General Notes:	This monoclonal antibody is also available in a different formulation with BSA and Sodium Azide - Anti-HER2 Antibody [ERB2/776] (A248456).
Disclaimer:	This product is for research use only. It is not intended for diagnostic or therapeutic use.

Anti-HER2 Antibody [ERB2/776] - BSA and Azide free (A251638)

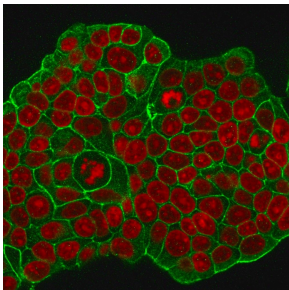
Images:



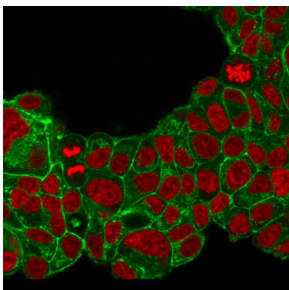
Flow cytometric analysis of human trypsinized MCF-7 cells using Anti-HER2 Antibody [ERB2/776] followed by Goat Anti-Mouse IgG (CF® 488) (Blue). Isotype Control (Red).



SDS-PAGE analysis of Anti-HER2 Antibody [ERB2/776] under non-reduced and reduced conditions; showing intact IgG and intact heavy and light chains, respectively. SDS-PAGE analysis confirms the integrity and purity of the antibody.



Immunofluorescent analysis of methanol fixed MCF-7 cells stained with Anti-HER2 Antibody [ERB2/776] followed by Goat Anti-Mouse IgG (CF® 488) (Green). Nuclear counterstain is RedDot.



Immunofluorescent analysis of PFA fixed MCF-7 cells stained with Anti-HER2 Antibody [ERB2/776] followed by Goat Anti-Mouse IgG (CF® 488) (Green). Nuclear counterstain is RedDot.