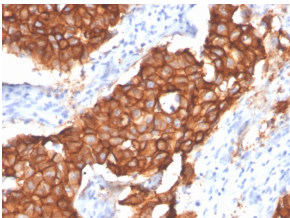


## Anti-HER2 Antibody [ERBB2/4439] - BSA and Azide free (A251641)

### Specifications:

Name:	Anti-HER2 Antibody [ERBB2/4439] - BSA and Azide free
Description:	Rabbit monoclonal [ERBB2/4439] antibody to HER2.
Applications:	Flow Cytometry, IF, IHC-P
Recommended Dilutions:	Flow Cytometry: 1-2 µg/million cells, IF: 1-2 µg/ml, IHC-P: 1-2 µg/ml
Reactivity:	Human
Immunogen:	Recombinant protein encoding the extracellular domain of human c-erbB2.
Host:	Rabbit
Clonality:	Monoclonal
Clone ID:	ERBB2/4439
Isotype:	IgG
Conjugate:	Unconjugated
Purification:	Protein A/G chromatography.
Concentration:	1 mg/ml
Product Form:	Liquid
Formulation:	Supplied in 10mM Phosphate Buffered Saline; without Sodium Azide and carrier free.
Storage:	Shipped at 4°C. Upon delivery aliquot and store at -20°C. Avoid freeze / thaw cycles.
General Notes:	This monoclonal antibody is also available in a different formulation with BSA and Sodium Azide - Anti-HER2 Antibody [ERBB2/4439] (A248459).
Disclaimer:	This product is for research use only. It is not intended for diagnostic or therapeutic use.

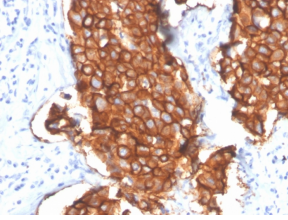
### Images:



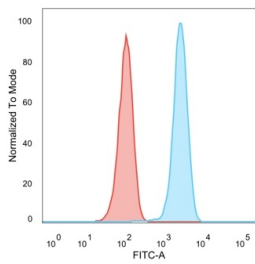
Immunohistochemical analysis of formalin-fixed, paraffin-embedded human breast carcinoma using Anti-HER2 Antibody [ERBB2/4439].

## Anti-HER2 Antibody [ERBB2/4439] - BSA and Azide free (A251641)

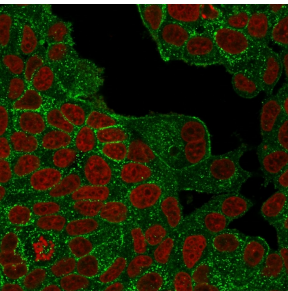
Images continued:



Immunohistochemical analysis of formalin-fixed, paraffin-embedded human breast carcinoma using Anti-HER2 Antibody [ERBB2/4439].



Flow cytometric analysis of PFA fixed MCF-7 cells using Anti-HER2 Antibody [ERBB2/4439] followed by Goat Anti-Rabbit IgG (CF® 488) (Red). Isotype Control (Blue).



Immunofluorescent analysis of PFA fixed MCF-7 cells stained with Anti-HER2 Antibody [ERBB2/4439] followed by Goat Anti-Rabbit IgG (CF® 488) (Green). Nuclear counterstain is RedDot (Red).