

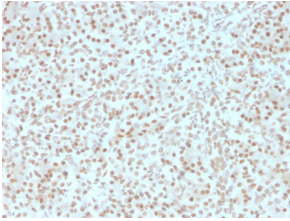
Anti-AKT1 Antibody [AKT1/2491] - BSA and Azide free (A251648)

Specifications:

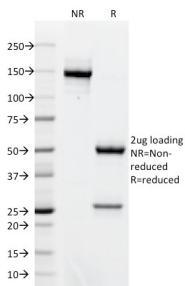
Name:	Anti-AKT1 Antibody [AKT1/2491] - BSA and Azide free
Description:	Mouse monoclonal [AKT1/2491] antibody to AKT1.
Specificity:	This antibody recognizes a protein of 62kDa, which is identified as AKT1. The serine/threonine kinase Akt family contains several members, including Akt1 (also designated PKB or RacPK), Akt2 (also designated PKB tyrosine residues 740 and 751, which bind the subunit of the phosphatidylinositol 3-kinase (PI 3-kinase) complex. Activation of Akt1 by insulin or insulin-growth factor-1(IGF-1) results in phosphorylation of both Thr 308 and Ser 473. Akt proteins become phosphorylated and activated in insulin/IGF-1-stimulated cells by an upstream kinase(s), and the activation of Akt1 and Akt2 is inhibited by the PI kinase inhibitor wortmannin.
Applications:	WB, IHC-P
Recommended Dilutions:	WB: 1-2 µg/ml, IHC-P: 1-2 µg/ml
Reactivity:	Human
Immunogen:	Recombinant fragment, around amino acids 85-189, of human AKT1 protein. The exact sequence is proprietary.
Host:	Mouse
Clonality:	Monoclonal
Clone ID:	AKT1/2491
Isotype:	IgG2b
Light Chains:	kappa
Conjugate:	Unconjugated
Purification:	Protein A/G chromatography.
Concentration:	1 mg/ml
Product Form:	Liquid
Formulation:	Supplied in 10mM Phosphate Buffered Saline; without Sodium Azide and carrier free.
Storage:	Shipped at 4°C. Upon delivery aliquot and store at -20°C. Avoid freeze / thaw cycles.
General Notes:	This monoclonal antibody is also available in a different formulation with BSA and Sodium Azide - Anti-AKT1 Antibody [AKT1/2491] (A248466).
Disclaimer:	This product is for research use only. It is not intended for diagnostic or therapeutic use.

Anti-AKT1 Antibody [AKT1/2491] - BSA and Azide free (A251648)

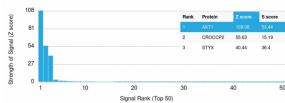
Images:



Immunohistochemical analysis of formalin-fixed, paraffin-embedded human pancreas using Anti-AKT1 Antibody [AKT1/2491].



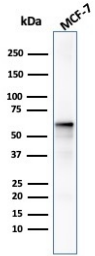
SDS-PAGE analysis of Anti-AKT1 Antibody [AKT1/2491] under non-reduced and reduced conditions; showing intact IgG and intact heavy and light chains, respectively. SDS-PAGE analysis confirms the integrity and purity of the antibody.



Analysis of protein array containing more than 19,000 full-length human proteins using Anti-AKT1 Antibody [AKT1/2491]. Z-Score and S- Score: The Z-score represents the strength of a signal that a monoclonal antibody (MAb) (in combination with a fluorescently-tagged anti-IgG secondary antibody) produces when binding to a particular protein on the HuProt™ array. Z-scores are described in units of standard deviations (SD's) above the mean value of all signals generated on that array. If targets on HuProt™ are arranged in descending order of the Z-score, the S-score is the difference (also in units of SD's) between the Z-score. S-score therefore represents the relative target specificity of a MAb to its intended target; a MAb is considered to be specific to its intended target, if the MAb has an S-score of at least 2.5. For example, if a MAb binds to protein X with a Z-score of 43 and to protein Y with a Z-score of 14, then the S-score for the binding of that MAb to protein X is equal to 29.

Anti-AKT1 Antibody [AKT1/2491] - BSA and Azide free (A251648)

Images continued:



Western blot analysis of MCF-7 cell lysate using Anti-AKT1 Antibody [AKT1/2491].