

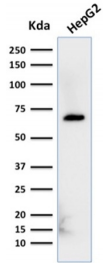
Anti-Albumin Antibody [ALB/2356] - BSA and Azide free (A251684)

Specifications:

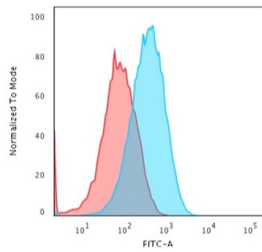
Name:	Anti-Albumin Antibody [ALB/2356] - BSA and Azide free
Description:	Mouse monoclonal [ALB/2356] antibody to Albumin.
Specificity:	This antibody is Monospecific to albumin and shows no significant cross-reaction with other human proteins. Albumin is a soluble, monomeric protein, which comprises about one half of the blood serum protein. Albumin functions primarily as a carrier protein for steroids, fatty acids, and thyroid hormones and plays a role in stabilizing extracellular fluid volume. Albumin is synthesized in the liver as preproalbumin, which has an N-terminal peptide that is removed before the nascent protein is released from the rough endoplasmic reticulum. The product, proalbumin, is in turn cleaved in the Golgi vesicles to produce the secreted form of albumin.
Applications:	ELISA, Flow Cytometry, IF, WB
Recommended Dilutions:	Flow Cytometry: 1-2 µg/million cells, IF: 2-4 µg/ml, WB: 1-2 µg/ml
Reactivity:	Human
Immunogen:	Recombinant full-length human ALB protein.
Host:	Mouse
Clonality:	Monoclonal
Clone ID:	ALB/2356
Isotype:	IgG2a
Light Chains:	kappa
Conjugate:	Unconjugated
Purification:	Protein A/G chromatography.
Concentration:	1 mg/ml
Product Form:	Liquid
Formulation:	Supplied in 10mM Phosphate Buffered Saline; without Sodium Azide and carrier free.
Storage:	Shipped at 4°C. Upon delivery aliquot and store at -20°C. Avoid freeze / thaw cycles.
General Notes:	This monoclonal antibody is also available in a different formulation with BSA and Sodium Azide - Anti-Albumin Antibody [ALB/2356] (A248502).
Disclaimer:	This product is for research use only. It is not intended for diagnostic or therapeutic use.

Anti-Albumin Antibody [ALB/2356] - BSA and Azide free (A251684)

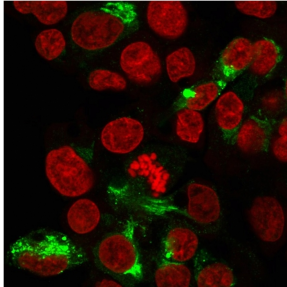
Images:



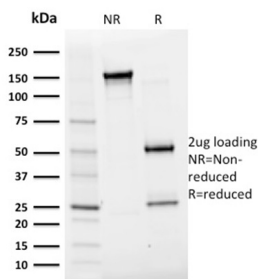
Western blot analysis of HepG2 cell lysate using Anti-Albumin Antibody [ALB/2356].



Flow cytometric analysis of paraformaldehyde fixed HepG2 cells using Anti-Albumin Antibody [ALB/2356] followed by Goat Anti-Mouse IgG (CF® 488) (Blue). Isotype Control (Red).



Immunofluorescent analysis of paraformaldehyde fixed HepG2 cells stained with Anti-Albumin Antibody [ALB/2356] followed by Goat Anti-Mouse IgG (CF® 488) (Green). Nuclear counterstain is RedDot.



SDS-PAGE analysis of Anti-Albumin Antibody [ALB/2356] under non-reduced and reduced conditions; showing intact IgG and intact heavy and light chains, respectively. SDS-PAGE analysis confirms the integrity and purity of the antibody.