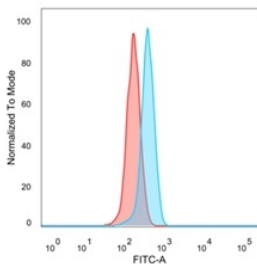


Anti-GTF2H2 Antibody [PCRP-GTF2H2-1B9] - BSA and Azide free (A251968)

Specifications:

Name:	Anti-GTF2H2 Antibody [PCRP-GTF2H2-1B9] - BSA and Azide free
Description:	Mouse monoclonal [PCRP-GTF2H2-1B9] antibody to GTF2H2.
Applications:	Flow Cytometry, IF
Recommended Dilutions:	Flow Cytometry: 1-2 µg/million cells, IF: 1-2 µg/ml
Reactivity:	Human
Immunogen:	Recombinant full-length human GTF2H2 protein.
Host:	Mouse
Clonality:	Monoclonal
Clone ID:	PCRP-GTF2H2-1B9
Isotype:	IgG1
Conjugate:	Unconjugated
Purification:	Protein A/G chromatography.
Concentration:	1 mg/ml
Product Form:	Liquid
Formulation:	Supplied in 10mM Phosphate Buffered Saline; without Sodium Azide and carrier free.
Storage:	Shipped at 4°C. Upon delivery aliquot and store at -20°C. Avoid freeze / thaw cycles.
General Notes:	This monoclonal antibody is also available in a different formulation with BSA and Sodium Azide - Anti-GTF2H2 Antibody [PCRP-GTF2H2-1B9] (A248788).
Disclaimer:	This product is for research use only. It is not intended for diagnostic or therapeutic use.

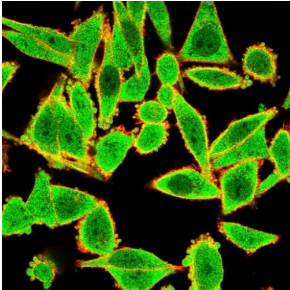
Images:



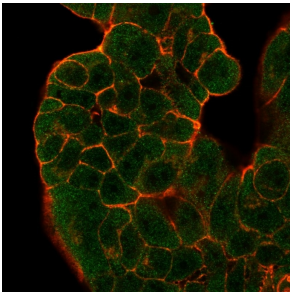
Flow cytometric analysis of PFA fixed HeLa cells using Anti-GTF2H2 Antibody [PCRP-GTF2H2-1B9] followed by Goat Anti-Mouse IgG (CF® 488) (Blue). Unstained cells (red).

Anti-GTF2H2 Antibody [PCRP-GTF2H2-1B9] - BSA and Azide free (A251968)

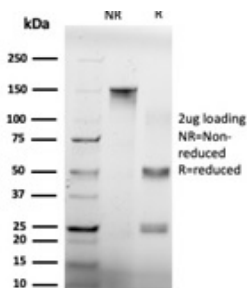
Images continued:



Immunofluorescent analysis of PFA fixed HeLa cells stained with Anti-GTF2H2 Antibody [PCRP-GTF2H2-1B9] followed by Goat Anti-Mouse IgG (CF® 488) (Green). Counterstain is Phalloidin (Red).



Immunofluorescent analysis of PFA fixed MCF-7 cells stained with Anti-GTF2H2 Antibody [PCRP-GTF2H2-1B9] followed by Goat Anti-Mouse IgG (CF® 488) (Green). Counterstain is Phalloidin (Red).



SDS-PAGE analysis of Anti-GTF2H2 Antibody [PCRP-GTF2H2-1B9] under non-reduced and reduced conditions; showing intact IgG and intact heavy and light chains, respectively. SDS-PAGE analysis confirms the integrity and purity of the antibody.