

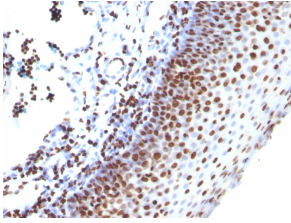
Anti-Histone H1 Antibody [SPM256] - BSA and Azide free (A251983)

Specifications:

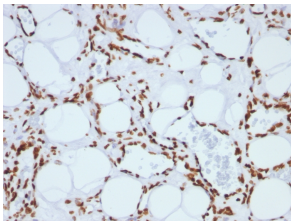
Name:	Anti-Histone H1 Antibody [SPM256] - BSA and Azide free
Description:	Mouse monoclonal [SPM256] antibody to Histone H1.
Applications:	Flow Cytometry, IF, WB, IHC-P
Recommended Dilutions:	Flow Cytometry: 1-2 µg/million cells, IF: 1-2 µg/ml, WB: 1-2 µg/ml, IHC-P: 1-2 µg/ml
Reactivity:	Human, Mouse, Rat
Immunogen:	Nuclei of human leukemia biopsy cells.
Host:	Mouse
Clonality:	Monoclonal
Clone ID:	SPM256
Isotype:	IgG2a
Light Chains:	kappa
Conjugate:	Unconjugated
Purification:	Protein A/G chromatography.
Concentration:	1 mg/ml
Product Form:	Liquid
Formulation:	Supplied in 10mM Phosphate Buffered Saline; without Sodium Azide and carrier free.
Storage:	Shipped at 4°C. Upon delivery aliquot and store at -20°C. Avoid freeze / thaw cycles.
General Notes:	This monoclonal antibody is also available in a different formulation with BSA and Sodium Azide - Anti-Histone H1 Antibody [SPM256] (A248803).
Disclaimer:	This product is for research use only. It is not intended for diagnostic or therapeutic use.

Anti-Histone H1 Antibody [SPM256] - BSA and Azide free (A251983)

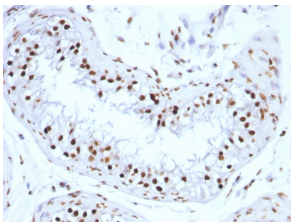
Images:



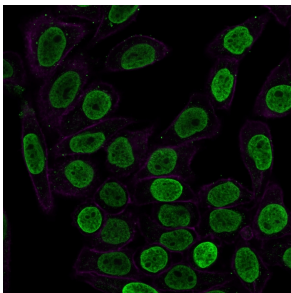
Immunohistochemical analysis of formalin-fixed, paraffin-embedded human tonsil using Anti-Histone H1 Antibody [SPM256].



Immunohistochemical analysis of formalin-fixed, paraffin-embedded human angiosarcoma using Anti-Histone H1 Antibody [SPM256].



Immunohistochemical analysis of formalin-fixed, paraffin-embedded human testicular carcinoma using Anti-Histone H1 Antibody [SPM256].



Immunofluorescent analysis of HeLa cells stained with Anti-Histone H1 Antibody [SPM256] (CF® 488) (Green). Phalloidin is used to label the membranes.