

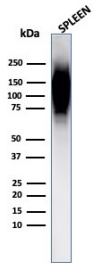
Anti-HIF1 alpha Antibody [Ha111a] - BSA and Azide free (A252009)

Specifications:

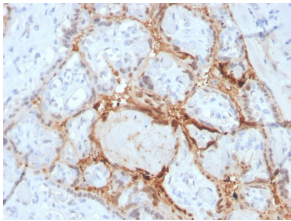
Name:	Anti-HIF1 alpha Antibody [Ha111a] - BSA and Azide free
Description:	Mouse monoclonal [Ha111a] antibody to HIF1 alpha.
Applications:	ELISA, WB, IHC-P
Recommended Dilutions:	WB: 1-2 µg/ml, IHC-P: 1-2 µg/ml
Reactivity:	Human, Mouse, Chicken
Immunogen:	Synthetic peptide corresponding to amino acids 239-530 of human HIF-1 alpha.
Host:	Mouse
Clonality:	Monoclonal
Clone ID:	Ha111a
Isotype:	IgG2a
Light Chains:	kappa
Conjugate:	Unconjugated
Purification:	Protein A/G chromatography.
Concentration:	1 mg/ml
Product Form:	Liquid
Formulation:	Supplied in 10mM Phosphate Buffered Saline; without Sodium Azide and carrier free.
Storage:	Shipped at 4°C. Upon delivery aliquot and store at -20°C. Avoid freeze / thaw cycles.
General Notes:	This monoclonal antibody is also available in a different formulation with BSA and Sodium Azide - Anti-HIF1 alpha Antibody [Ha111a] (A248829).
Disclaimer:	This product is for research use only. It is not intended for diagnostic or therapeutic use.

Anti-HIF1 alpha Antibody [Ha111a] - BSA and Azide free (A252009)

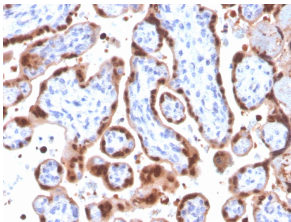
Images:



Western blot analysis of human spleen tissue lysate using Anti-HIF1 alpha Antibody [Ha111a].



Immunohistochemical analysis of formalin-fixed, paraffin-embedded human placenta using Anti-HIF1 alpha Antibody [Ha111a].



Immunohistochemical analysis of formalin-fixed, paraffin-embedded human placenta using Anti-HIF1 alpha Antibody [Ha111a].