

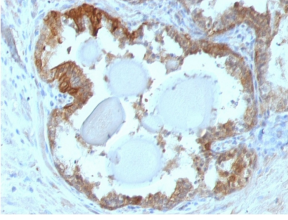
Anti-HSP27 Antibody [G3.1] - BSA and Azide free (A252052)

Specifications:

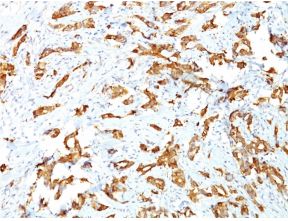
Name:	Anti-HSP27 Antibody [G3.1] - BSA and Azide free
Description:	Mouse monoclonal [G3.1] antibody to HSP27.
Specificity:	This antibody specifically recognizes HSP27 in human and monkey tissues and cell lines such as MCF-7.
Applications:	Flow Cytometry, IF, WB, IHC-P
Recommended Dilutions:	Flow Cytometry: 1-2 µg/million cells, IF: 1-2 µg/ml, WB: 1-2 µg/ml, IHC-P: 1-2 µg/ml
Reactivity:	Human, Chimpanzee, Monkey, Sheep, Rat, Mouse, Chicken
Immunogen:	Partially purified HSP27 (originally called 24K) protein from breast cancer MCF-7 cells.
Host:	Mouse
Clonality:	Monoclonal
Clone ID:	G3.1
Isotype:	IgG1
Light Chains:	kappa
Conjugate:	Unconjugated
Purification:	Protein A/G chromatography.
Concentration:	1 mg/ml
Product Form:	Liquid
Formulation:	Supplied in 10mM Phosphate Buffered Saline; without Sodium Azide and carrier free.
Storage:	Shipped at 4°C. Upon delivery aliquot and store at -20°C. Avoid freeze / thaw cycles.
General Notes:	This monoclonal antibody is also available in a different formulation with BSA and Sodium Azide - Anti-HSP27 Antibody [G3.1] (A248872).
Disclaimer:	This product is for research use only. It is not intended for diagnostic or therapeutic use.

Anti-HSP27 Antibody [G3.1] - BSA and Azide free (A252052)

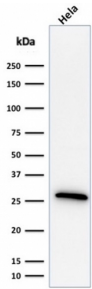
Images:



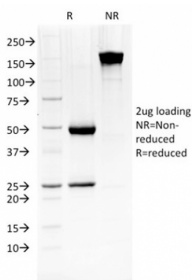
Immunohistochemical analysis of formalin-fixed, paraffin-embedded human prostate carcinoma using Anti-HSP27 Antibody [G3.1].



Immunohistochemical analysis of formalin-fixed, paraffin-embedded human breast carcinoma using Anti-HSP27 Antibody [G3.1].



Western blot analysis of HeLa cell lysate using Anti-HSP27 Antibody [G3.1].



SDS-PAGE analysis of Anti-HSP27 Antibody [G3.1] under non-reduced and reduced conditions; showing intact IgG and intact heavy and light chains, respectively. SDS-PAGE analysis confirms the integrity and purity of the antibody.