

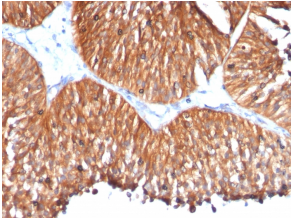
Anti-HSP60 Antibody [HSPD1/780] - BSA and Azide free (A252067)

Specifications:

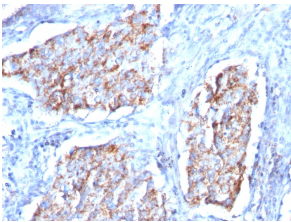
Name:	Anti-HSP60 Antibody [HSPD1/780] - BSA and Azide free
Description:	Mouse monoclonal [HSPD1/780] antibody to HSP60.
Applications:	Flow Cytometry, IF, WB, IHC-P
Recommended Dilutions:	Flow Cytometry: 1-2 µg/million cells, IF: 1-2 µg/ml, WB: 1-2 µg/ml, IHC-P: 1-2 µg/ml
Reactivity:	Human, Mouse, Rat, Hamster, Sheep, Rabbit, Bovine, Canine, Porcine, Monkey, Chicken
Immunogen:	Recombinant human HSPD1 protein.
Host:	Mouse
Clonality:	Monoclonal
Clone ID:	HSPD1/780
Isotype:	IgG1
Light Chains:	kappa
Conjugate:	Unconjugated
Purification:	Protein A/G chromatography.
Concentration:	1 mg/ml
Product Form:	Liquid
Formulation:	Supplied in 10mM Phosphate Buffered Saline; without Sodium Azide and carrier free.
Storage:	Shipped at 4°C. Upon delivery aliquot and store at -20°C. Avoid freeze / thaw cycles.
General Notes:	This monoclonal antibody is also available in a different formulation with BSA and Sodium Azide - Anti-HSP60 Antibody [HSPD1/780] (A248887).
Disclaimer:	This product is for research use only. It is not intended for diagnostic or therapeutic use.

Anti-HSP60 Antibody [HSPD1/780] - BSA and Azide free (A252067)

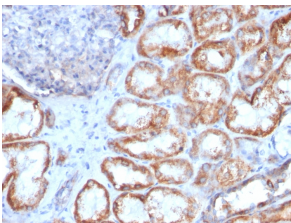
Images:



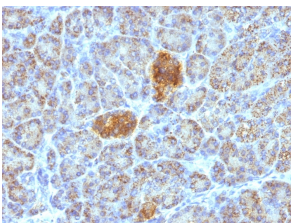
Immunohistochemical analysis of formalin-fixed, paraffin-embedded human bladder carcinoma using Anti-HSP60 Antibody [HSPD1/780].



Immunohistochemical analysis of formalin-fixed, paraffin-embedded human lung carcinoma using Anti-HSP60 Antibody [HSPD1/780].



Immunohistochemical analysis of formalin-fixed, paraffin-embedded human renal cell carcinoma using Anti-HSP60 Antibody [HSPD1/780].



Immunohistochemical analysis of formalin-fixed, paraffin-embedded human pancreas using Anti-HSP60 Antibody [HSPD1/780].