

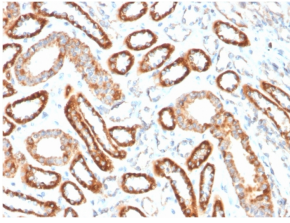
Anti-CD137 Antibody [4-1BB/3201] - BSA and Azide free (A252209)

Specifications:

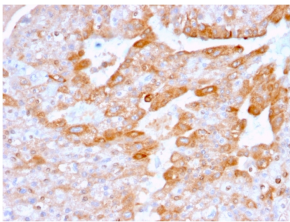
Name:	Anti-CD137 Antibody [4-1BB/3201] - BSA and Azide free
Description:	Mouse monoclonal [4-1BB/3201] antibody to CD137.
Applications:	ELISA, IF, Flow Cytometry, WB, IHC-P
Recommended Dilutions:	IF: 1-2 µg/ml, Flow Cytometry: 1-2 µg/million cells, WB: 1-2 µg/ml, IHC-P: 2-4 µg/ml
Reactivity:	Human
Immunogen:	Recombinant fragment, within amino acids 19-188, of human CD137 protein. The exact sequence is proprietary.
Host:	Mouse
Clonality:	Monoclonal
Clone ID:	4-1BB/3201
Isotype:	IgG1
Light Chains:	kappa
Conjugate:	Unconjugated
Purification:	Protein A/G chromatography.
Concentration:	1 mg/ml
Product Form:	Liquid
Formulation:	Supplied in 10mM Phosphate Buffered Saline; without Sodium Azide and carrier free.
Storage:	Shipped at 4°C. Upon delivery aliquot and store at -20°C. Avoid freeze / thaw cycles.
General Notes:	This monoclonal antibody is also available in a different formulation with BSA and Sodium Azide - Anti-CD137 Antibody [4-1BB/3201] (A249029).
Disclaimer:	This product is for research use only. It is not intended for diagnostic or therapeutic use.

Anti-CD137 Antibody [4-1BB/3201] - BSA and Azide free (A252209)

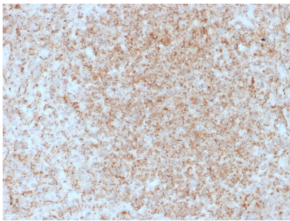
Images:



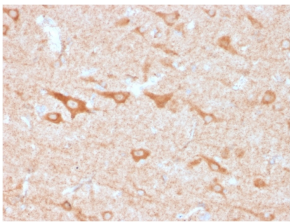
Immunohistochemical analysis of formalin-fixed, paraffin-embedded human renal cell carcinoma using Anti-CD137 Antibody [4-1BB/3201].



Immunohistochemical analysis of formalin-fixed, paraffin-embedded human renal cell carcinoma using Anti-CD137 Antibody [4-1BB/3201].



Immunohistochemical analysis of formalin-fixed, paraffin-embedded human spleen using Anti-CD137 Antibody [4-1BB/3201].



Immunohistochemical analysis of formalin-fixed, paraffin-embedded human cerebellum using Anti-CD137 Antibody [4-1BB/3201].