

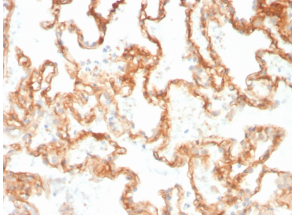
Anti-CD29 Antibody [ITGB1/3613] - BSA and Azide free (A252257)

Specifications:

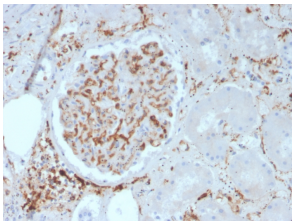
Name:	Anti-CD29 Antibody [ITGB1/3613] - BSA and Azide free
Description:	Mouse monoclonal [ITGB1/3613] antibody to CD29.
Specificity:	This antibody recognizes CD29. Binds to the cell membrane of T- and B- lymphocytes, monocytes, platelets, fibroblasts, endothelial cells, mast cells and smooth muscle cells. CD29 is an adhesion receptor and co-stimulatory molecule. This antigen was initially characterized as GPIIa on platelets and as the common b1 subunit of the very late antigen (VLA) protein family. CD29 forms a non-covalent heterodimeric complex with integrin alpha subunits. It also mediates adhesion to invasion and thrombospondin.
Applications:	ELISA, IHC-P
Recommended Dilutions:	IHC-P: 1-2 µg/ml
Reactivity:	Human
Cross Reactivity:	This antibody does not cross react with Mouse or Rat.
Immunogen:	Native human beta 1 Integrin purified from HT1080 fibrosarcoma cell extract.
Host:	Mouse
Clonality:	Monoclonal
Clone ID:	ITGB1/3613
Isotype:	IgG1
Light Chains:	kappa
Conjugate:	Unconjugated
Purification:	Protein A/G chromatography.
Concentration:	1 mg/ml
Product Form:	Liquid
Formulation:	Supplied in 10mM Phosphate Buffered Saline; without Sodium Azide and carrier free.
Storage:	Shipped at 4°C. Upon delivery aliquot and store at -20°C. Avoid freeze / thaw cycles.
General Notes:	This monoclonal antibody is also available in a different formulation with BSA and Sodium Azide - Anti-CD29 Antibody [ITGB1/3613] (A249077).
Disclaimer:	This product is for research use only. It is not intended for diagnostic or therapeutic use.

Anti-CD29 Antibody [ITGB1/3613] - BSA and Azide free (A252257)

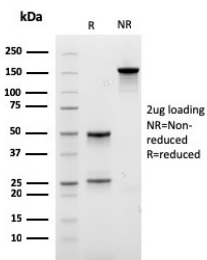
Images:



Immunohistochemical analysis of formalin-fixed, paraffin-embedded human lung using Anti-CD29 Antibody [ITGB1/3613].



Immunohistochemical analysis of formalin-fixed, paraffin-embedded human kidney using Anti-CD29 Antibody [ITGB1/3613].



SDS-PAGE analysis of Anti-CD29 Antibody [ITGB1/3613] under non-reduced and reduced conditions; showing intact IgG and intact heavy and light chains, respectively. SDS-PAGE analysis confirms the integrity and purity of the antibody.