

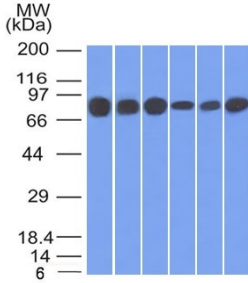
Anti-gamma Catenin Antibody [15F11] - BSA and Azide free (A252277)

Specifications:

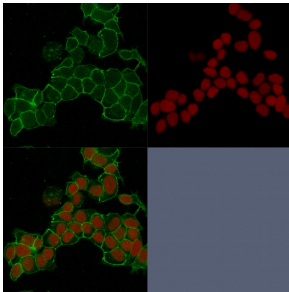
Name:	Anti-gamma Catenin Antibody [15F11] - BSA and Azide free
Description:	Mouse monoclonal [15F11] antibody to gamma Catenin.
Applications:	Flow Cytometry, IF, WB
Recommended Dilutions:	Flow Cytometry: 1-2 µg/million cells, IF: 1-2 µg/ml, WB: 1-2 µg/ml
Reactivity:	Human, Mouse, Feline, Rat, Chicken, Bovine, Canine
Immunogen:	Recombinant full-length chicken gamma Catenin protein.
Host:	Mouse
Clonality:	Monoclonal
Clone ID:	15F11
Isotype:	IgG1
Light Chains:	kappa
Conjugate:	Unconjugated
Purification:	Protein A/G chromatography.
Concentration:	1 mg/ml
Product Form:	Liquid
Formulation:	Supplied in 10mM Phosphate Buffered Saline; without Sodium Azide and carrier free.
Storage:	Shipped at 4°C. Upon delivery aliquot and store at -20°C. Avoid freeze / thaw cycles.
General Notes:	This monoclonal antibody is also available in a different formulation with BSA and Sodium Azide - Anti-gamma Catenin Antibody [15F11] (A249097).
Disclaimer:	This product is for research use only. It is not intended for diagnostic or therapeutic use.

Anti-gamma Catenin Antibody [15F11] - BSA and Azide free (A252277)

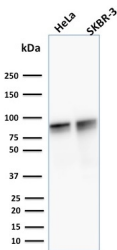
Images:



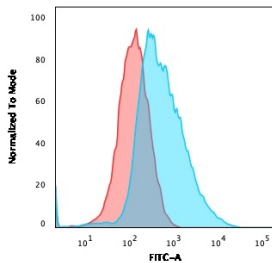
Western blot analysis of HT20, 293, A431, MCF-7, HepG2, and A549 cell lysates using Anti-gamma Catenin Antibody [15F11].



Immunofluorescent analysis of HeLa cells stained with Anti-gamma Catenin Antibody [15F11] (CF® 488) (Green). Nuclear counterstain is RedDot.



Western blot analysis of human HeLa and SK-BR-3 cell lysates using Anti-gamma Catenin Antibody [15F11].



Flow cytometric analysis of PFA fixed MCF cells using Anti-gamma Catenin Antibody [15F11] followed by Goat Anti-Mouse IgG (CF® 488) (Blue). Isotype Control (Red).